

About us

AUDAC provides a complete range of audio equipment such as amplifiers, loudspeakers, microphones and much more.

We design, manufacture, and distribute an extensive line of products.

Being successful in business requires exceptional products that meet the needs of the end user. Our mission is to make good products for a competitive price, and our corporate objective is to continue to grow within the electronic area, further establishing our position as a major international manufacturer.

We demand that quality comes first and are very proud of our top rating with our customers.

Our employees, including engineers and technicians, are well trained and equipments are continuously upgraded to handle changing new technologies and complex manufacturing demands



Index

Web Based Products

Web based	4
The Future	5
M1	6-9
R1	10-13
Specs M1-R1	14
APG10	15
LIM012	16
ASL30	17
MVF16	18
WP18-WP18T	19
WLI20-WLI16	20
Specs	21

APM Paging Systems

Paging	22
APM01-APM04-APM08-APM16	23
ARU04-ARU08-ARU16	24
AVD04-AVD08-AVD16	25
ARJ03-ARJ03P	25
APM Software	26
Specs	27

19" Commercial Sound Series

CPA22	28
CPA24-CPA48	29

Table Top Series

COM12	30-31
-------	-------

19 inch Pro Sound Series

PRE16	32
PRE26	33
D2-D3	34
D4-D5	35
T2-T4	36
Q2-Q2TR	37
Q4-Q4TR	38
Specs	39-41

PX Project Cabinets

PX108	43
PX110-PX112	44
PX115	45
MBK' S	46
CP' S	46

RX Road Cabinets

RX112	47
RX115	48
Specs	49

SX Sub Cabinets

SX12	51
SX412-SX415	52
SX418	53
SX408A	53
MBK408	53

FX Sub Cabinets

FX3.12	54
FX1.15	55
FX2.15	56
FX1.18	56

HS Horn Cabinets

HS152-HS181	57
-------------	----

HS Horn Drivers

HS208-HS208T	58
HS212-HS212T	59
MBK208	58-59
Specs	60-63

WX Speaker Cabinets

WX302	64
WX502-WX802	65

BX Speaker Cabinets

BX 5.2	66
--------	----

Wall Speakers

WS500	67
WS524-WS524/D	68
WS624-WS624/D	68

Ceiling Speakers

CS55	69
CS65	69
CS65/D	69
CS75	69
CS85	69
CS1000S	70
CTR06	70
CTR24	70

Cuban Speakers

CS2.1-CS3.1-CS3.2	71
-------------------	----

Sound Projectors

HS120	72
SP21-SP21HA	73

Column Speakers

KYDO	74
AXIR	75
Specs	76-80

Microphones

M67-M87	82
PDM100	82
MC50	82
CMX45-CMX55	83
MC720	83
MP100	84
APM	84
APT20	84
HM150	84

Transformers

TR1006-TR1010	85
ATU44	85
TR3030-TR3040	
TR3060-TR3080	86
TR3120-TR3240-TR3480	86

Volume Controls

VC2036	87
VC3036B-VC3036W	87
VC4036B-VC4036W	87

Program Controls

PC3000B-PC3000W	87
PC4000B-PC4000W	87

Connection Plates

CP45RCA	88
CP45BNC	88
CP45VGA	88
CP45XLM	88
CP45XLF	88
CP45SPE	88
CP45CF1-CP45CF2	88
CP43 plates	88

Measurement Appliances

LCR610	89
SLM330	89
SLC336	89
CASE3	89

Antenna

RGA10	90
-------	----

Power Supply

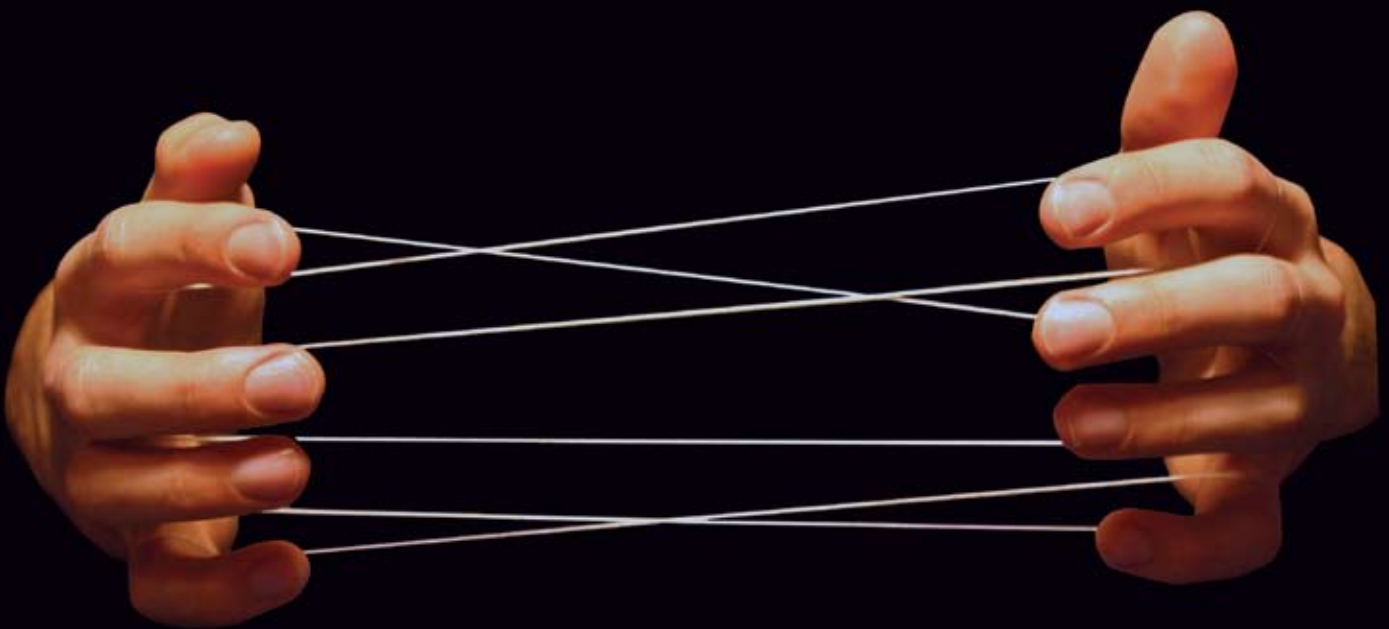
PSD242	90
Specs	91-94

Web Based Multi Amplifiers

AUDAC has chosen for a web based design for the Multi-zone and Multi-room amplifiers, and is the first audio manufacturer in the world that started to use Web Based Audio products. What does WEB BASED mean?

We all know, there is no stopping on the expansion of the Internet. We at AUDAC recognize this evolution, and are convinced that, in the future, everything will be a "Web Site". Therefore, AUDAC designed their newest products to be Web based, which means that the amplifier can easily be controlled by means of a PC, laptop computer or PDA.

All you will ever need is a standard LAN network and a standard web browser. No special software is needed. To control the amplifier, just surf to the appropriate web-site, log in and you're in business. Of course the amplifier can also be controlled on the device it self. All major parameters can be controlled by the control buttons and switches on the amplifier. You can even connect optional wall panel controllers by means of a RS485 connection, to get direct source and volume control per zone. And it is even possible to use other external control systems like AMX, CRESTON, etc... using the RS232 port of the amplifier.



The Future



i Web based ...



M1

The M1 Multimedia Amplifier was developed to achieve four goals :

- delivering a flexible audio solution for multi-purposes,
- easy to use,
- excellent sound quality,
- an advanced digital control interface.



M1 Multimedia Amplifier

The M1 Multimedia amplifier is a truly polyvalent “all-in one” multizone amplifier. The possibilities are almost endless thanks to the flexible but logical concept combined with several digital options, such as the web based control feature.

The M1 is suitable for installation in different types of situations like restaurants, clubs, bars, theaters, conference rooms, house of worship, etc...

With the M1 you can route up to 10 input channels to 4 different Zone outputs. It can handle balanced microphone signals or stereo line signals on channel 1 to 6, and stereo line signals on channel 7 to 10.

The routing can be set into 2 operation modes.

When set to switch mode, only 1 channel at a time can be routed to the selected zone. When set to mix mode, all 7 channels can be routed simultaneously to the selected zone. This offers you the possibility to use the amplifier as a Mic/Line mixer for DJ or conference purposes.

A simple example :

When installed in a restaurant with 4 separate rooms, it is possible to play popular music in the bar, cocktail music in the lounge, jazz music in the hall and classical music in the dining room, assuming that there are 4 different sources selectable, and the volume in each room can be controlled separately.

The M1 is built as a 19” rack type device for mounting in a 19” rack. This makes the M1 the best choice in various applications.

M1 is available in 2 versions :

- 1 .M1 including 2 x 150 W @ 4 Ohm stereo amplification for zone 1 and 2.
2. M1-Light without amplification.



M1 Multimedia Amplifiers



At the front of the M1 you can find all the necessary controls, arranged in logical and practical order to obtain maximum simplicity. The input and output sections are distinctly separated from each other. On the left you can find the 10 input channels, on the right you can find the 4 zone output channels. Clear and accurate 2 x 8 segment stereo VU level indicators show the level of the outgoing signal on each zone.

i Multimedia Amplifiers



input

Input 1 – 6
Routing, stereo balance and volume of each channel can be easily controlled using the appropriate knobs and buttons. A red led indicates when the signal clips to avoid distortion of the incoming signal.



input

Input 7 – 10
Routing, stereo balance and volume of each channel can be easily controlled using the appropriate knobs and buttons. Only 1 stereo signal at a time can be selected using the CH7 – CH10 buttons. A 2 x 8 segment stereo VU level indicator is added for visual verification of the incoming signal level.



output

Output zone 1 – 4
Signal quality and output level can be controlled using the 2 equalizing and the volume knob. A 2 x 8 segment stereo VU level indicator per zone is added for visual verification of the outgoing signal level.

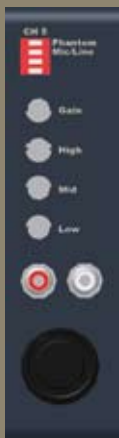
Multizone Amplifiers

M1



At the back of the amplifier, all the necessary controls and connection possibilities can be found, arranged in logical and practical order to obtain maximum flexibility and simplicity.

Multimedia Amplifiers



input

Input 1 – 6
Each channel has a set of dipswitches to select the type of signal (Mic or line) and to activate 48 V phantom power for condenser microphones, a gain control, a 3 band equalizing (High – Mid– Low), stereo cinch connectors and a XLR connector.



input

Input 7 – 10
This input channel features a gain control, a 2 band equalizing (High – Low) and 4 stereo cinch connectors to connect a up to 4 stereo line sources



output

Output zone 1 – 4
Each zone is equipped with 2 balanced XLR connectors for sending the output signal to external amplifiers, using a balanced signal. On zone 1 and 2, speakers can be directly connected without using an external amplifier, as long as the total ratings of the speakers don't exceed the ratings of the amplifier section.



data

Data
Here you can link the amplifier to the LAN network using the Remote control (Ethernet) connection for controlling the system with the web browser, connect the optional wall panel controllers per zone using the RS485 inputs and optional external controllers, such as AMX, Creston using the RS232 connector. Also a dipswitch is provided to select the priority for input channel 1 and 2, to achieve the possibility for emergency and priority calls.



R1 Multiroom Amplifier



The R1 Multiroom amplifier is the ideal solution wherever a multiroom audio distribution system is required. Thanks to the flexible and new advanced digital design, using the web based control function, the R1 can be used in almost any situation. The R1 has a full matrix concept and can route 8 separate audio sources to 8 separate zone outputs.

In case you need to control more than 8 zones, no problem at all. The R1 has the possibility to link up to 16 devices in cascade, which gives you the possibility to control up to 128 separate zone outputs, using the 8 original audio sources.

Due to the web based feature you can control the complete R1 system, using a standard PC (or laptop or PDA) and a standard web browser. You surf to the appropriate web page and you have full control of the system. Of course, there is also the choice to use optional wall controllers for each zone, using the RS485 connections, or an external control device (as AMX, Crestron) using the RS232 connection.

Further more, 2 priority inputs with adjustable gain settings are provided for voice file messages and priority calls. An optional interface is available to use AUDAC's Digital Paging microphones for emergency and priority calls.

The R1 is built as a 19" rack type device for mounting in a 19" rack. This makes the R1 the best choice in various applications.

The R1 is available in 2 versions.

1. R1 including 8 x 40 W @ 4 Ohm stereo amplification.
2. R1-Light without amplification.



R1 Multiroom Amplifier



At the front of the R1 you can find all the necessary controls, arranged in logical and practical order to obtain maximum simplicity. Clear and accurate 2 x 8 segment stereo VU level indicators show the strength of the outgoing signal on each zone.



Output zone 1 – 8



Selection of the desired audio source, 2 band equalizing and volume of each zone can be easily controlled using the appropriate knobs and buttons. 2 x 8 segment stereo VU level indicators are added for visual verification of the outgoing audio signal level on each zone.

output

Multizone Amplifier

R1



At the back of the amplifier, all the necessary controls and connection possibilities can be found, arranged in logical and practical order to obtain maximum flexibility and simplicity.



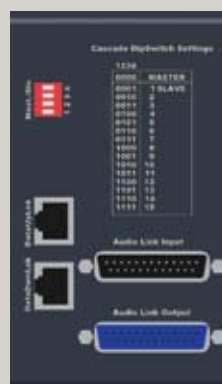
in-output

Input 1 – 8 / output zone 1 – 8
Each audio source input channel is provided with a Clipping led to check that the input signal is not distorted; a gain control to control the input channel and a stereo cinch line level input connection. Each zone output has a stereo cinch line level output connection for external amplifiers, and an amplified stereo audio output, rated at 40 W @ 4 Ohm. (Not for the R1-Light).



input

Priority inputs
Gain control and audio connection for each priority input are situated here, as well as the connections for priority contact switches.



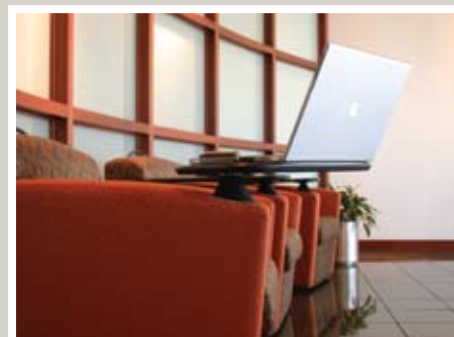
link

Link section
Here you can find the connections to link 2 or more R1's in cascade. Each R1 should be addressed manually, using the dipswitches according to the setting table. Original audio inputs have to be linked using the audio link input and audio link output connectors. Data up link and Data down link are provided for data transmission between the R1's which are linked to each other.



data

Data
Here you can link the amplifier to the LAN network using the Remote control (Ethernet) connection for controlling the system with the web browser, connect the optional wall panel controllers per zone using the RS485 inputs and optional external controllers using the RS232 connector. And of course the main power connection can be found here too.



Multimedia Amplifiers

M1-M1 *Light*
R1-R1 *Light*

	M1	M1 light	R1	R1 light
Sensitivity Microphone input	-60/-20 dB at 600 Ohm balanced		n/a	
Sensitivity Line input	-20/+4 dB at 10K Ohm		-20/+4dB at 25k Ohm	
Frequency response	20 Hz - 20 kHz			
T.H.D. by 1 kHz	< 0,1%			
Signal to noise ratio	100 dB at 1kHz			
Slew rate	± 30V/μsec		± 13V/μsec	
Start-up time	± 35 sec.			
Serial port	RS232 (sub-d 9)			
Remote zone control (1-4)	RS485 (RJ45)			
Web based control	Ethernet (RJ45)			
Priority Inputs	Channel 1 and 2		2 separate inputs	
Phantom Power	48 Volt DC		n/a	
Zone outputs	+3 dB at 150 Ohm balanced		+3dB at 100 Ohm unbalanced	
Output power per channel				
Stereo mode	100 Watt at 8 Ohm	n/a	20 Watt at 8 Ohm	n/a
	150 Watt at 4 Ohm	n/a	40 Watt at 4 Ohm	n/a
Bridged mode	300 Watt at 8 Ohm	n/a	n/a	n/a
Power supply	240 V AC, 50-60 Hz			
Max. power consumption	600 W	60 W	650 W	60 W
Dimensions (H x B x D)	132 x 482 x 350 mm			
Unit height	3 HE			
Weight	12 Kg	8,2 Kg	13 Kg	10 Kg

APG10

APM to R1 Interface

The AUDAC APM TO R1 interface is an additional interface to connect the AUDAC APM system with the AUDAC R1 Multiroom amplifier. The connection is done by using one of the RS485 connections and the channel 1 audio connection on the back of the AUDAC R1 amplifier. How to configure the Audac Paging System for a setup with the Audac R1 will be described in the help file of the Audac Paging System Configuration Tool.



APG10

● **APM-R1 Interface**

LIM012

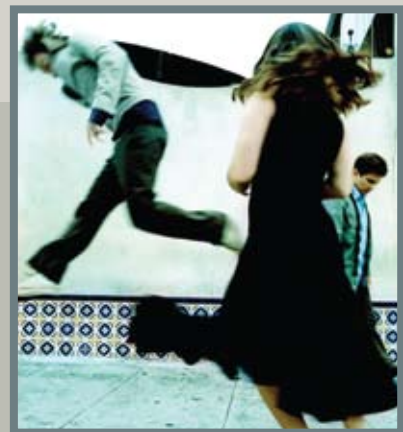
Stereo Limiter balanced

Audac's LIM012 is a small sized and easy to use sound limiter, to protect your sound system and comply with the restrictions imposed by law.



LIM012

● Stereo limiter balanced



ASL30

Ethernet Sound Level meter

The ASL30 Ethernet Sound Level Meter is developed as an easy to use dB-measuring device, which can be used to control any AUDAC R1 Multiroom amplifier. The ASL30 can operate in 4 different modes, depending on the situation it is used in.

- Offset mode for controlling background music, in according to the ambient noise.
- Max/Min dB mode for fixed maximum/minimum level control.
- Paging mode to control the level of the paging signal, using an AUDAC APM Digital Paging Microphone, to make sure the message is clear and understandable.

The ASL30 has to be connected to the network for configuration and control.

It has the same Web based design as the M1 and R1 series.

No extra software is needed, go to the appropriate site, log in and you're in charge.

The ASL30 consists of 2 parts, the sound level meter and a calibrated measuring microphone with a cinch connector.



ASL30

● Ethernet Sound level meter



MVF16

Voice File Interface



The AUDAC MVF16 Multi Voice File interface is developed to be used in combination with the Inter-M MVF2132 Multi Voice File player. The MVF16 module provides 14 contacts which can be used to command the INTER-M MVF2132 by means of the serial interface. The standard configuration provides 1 fire alarm contact, 13 regular contacts to select the according message file and 2 open collector outputs which can be used to switch a relay.



MVF16

● Voice File Interface

Wall panel

The WP18 Wall Panel Controller is specially designed to work with AUDAC's M1 and R1 series. It gives the user the possibility to select the desired audio source and control the volume for the zone it's applied to. Connection is achieved by using a standard Cat5 UTP cable on the appropriate RS485 connector.

The controller's address is set by means of jumper settings on the back of the wall panel. In case multiple wall panels are desired for larger rooms, the AUDAC ARJ03 3-way junction box can be applied.

Web Based User Interface

2 versions of the Web Based User Interface are available.

The Standard Web Based User interface is the most detailed interface and is designed to control every aspect of the M1 / R1 amplifier. Settings can be changed, routings can be altered, and for the R1 you can even set timers. The Lite Web Based User Interface is designed for PDA users, just to control the routing and the volume of the desired zones. Both Interfaces are freely accessible, as long as the used PC is connected to the same network as the amplifier.



WP18

● Wall Panel Controller

Wall panel controller 8 sources



WP18T

● Wall Panel Controller

Wall panel controller 8 sources bTicino



Input Units



WLI20

Wall line input unit

The AUDAC WLI20 wall stereo line input unit is especially designed to work in combination with the AUDAC M1 or R1 amplifiers and WP18 wall panels. This wall panel creates an extra local stereo line input in separate zones. The WLI20 features a small internal amplifier to route the line signal to the amplifier without any interference or loss of quality.



WMI16

● Wall Microphone input unit

The AUDAC WMI16 wall microphone input unit is especially designed to work in combination with the AUDAC M1 or R1 amplifiers and WP18 wall panels. This wall panel creates an extra local microphone input in separate zones. The WMI16 features a small internal amplifier to route the microphone signal to the amplifier without any interference or loss of quality.

Wall panels, Limiters etc,...

WP18 WM16 WLI20 MVF16 APG10

	WP18	WMI16	WLI20	MVF16	APG10
Digital control	RS485	n/a	n/a	RS232	RS485
Connector	RJ45	XLR female	2 x RCA/Cinch	RJ45	Cinch / RJ45
Dimensions (H x W x D)	45 x 45 x 33 mm	45 x 45 x 33 mm	45 x 45 x 33 mm	35 x 105 x 110 mm	108 x 43 x 96 mm
Weight	28 g	0,120 Kg	0,120 Kg	0.240 Kg	0,237 Kg
Colour	Black / White			Black	
Power supply	n/a	n/a	n/a	24 V DC	
Option	bTichino model				

ASL30

	ASL30
Digital control	Ethernet
Measurement range	< 120dB
Measurement system	A-weighting filter
	C-weighting filter
Microphone type	Electret
Microphone polar pattern	Omnidirectional
Microphone Frequency response	50 Hz - 16 kHz
Microphone sensitivity	7,9 mV / 1 kHz ; ± 3 dB
Microphone impedance	2,2 k Ohm
Sensitivity Measuring device	> 80dB
Power supply	24V DC
Power consumption	3 Watt
Dimensions (H x W x D)	44 x 110 x 160 mm
Weight	0.470 Kg

LIM12

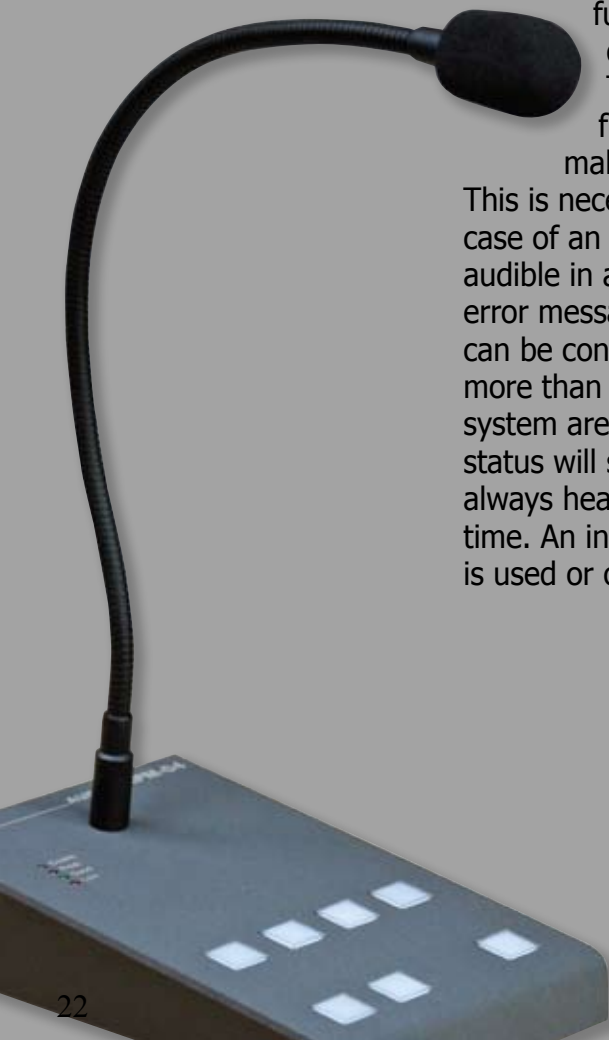
	LIM012
Input	20 kOhm
Input Level	-10 dB
Output	20 kOhm
Output Level	-10 dB
Level Range	0 dB to -30 dB
Frequency response	20 Hz to 20 kHz
THD+N	<0,15%
Signal to noise ratio	< -90 dB
Power Supply	24 V DC
Connectors	2 x XLR F / 2 x XLR M
Construction	Aluminum
Dimension (WxHxD)	44 x 110 x 160 mm
Weight	0.470 Kg
Colour	Black
Option	PSD242 Power supply



Paging Systems

The AUDAC APM paging system is specially designed to fulfill all your needs for priority calls, dispatching and evacuation purposes. Practical value, aesthetic, reliability and functionality have always been the guide lines for the development and design of the APM paging system. The operation of the system is digitally controlled from microphone cell to signal amplifier, to detect any malfunction or failure in the system.

This is necessary to insure a 100% reliability of the system in case of an emergency call. The broadcasted message has to be audible in all cases. If there is a malfunction of the system, an error message occurs on the APM console. Each APM console can be configured individually, including priority settings in case more than 1 console is used. Because all consoles in the same system are using the same digital bus connection, the priority status will see to it that the console with the highest priority is always heard in case more than 1 console is operated at the time. An indication led tells the user when the digital signal bus is used or occupied.



Paging Microphones

All APM consoles are equipped with a condenser microphone with cardiologic polar characteristics, mounted on a 30 cm long gooseneck. A built-in compressor / limiter insure an optimal signal. The status of the signal can be controlled visually, so the user is sure that the message is clear and audible. Each console has 3 standard buttons (except APM01, only PTT) with pre assigned functions, PTT (Push to Talk), Select all and clear, which can not be altered. All other buttons can be freely programmed, using the free software and a RS232 to RS485 converter module. All the APM consoles in one system are connected using a standard CAT5 UTP cable in addition with the necessary AUDAC ARU or AVD relays module, and the AUDAC ARJ03 junction box if more than 1 console is used.



APM01

● Paging Microphone

Digital paging microphone for 1 zone



APM04

● Paging Microphone

Digital paging microphone for 4 zones



APM08

● Paging Microphone

Digital paging microphone for 8 zones



APM16

● Paging Microphone

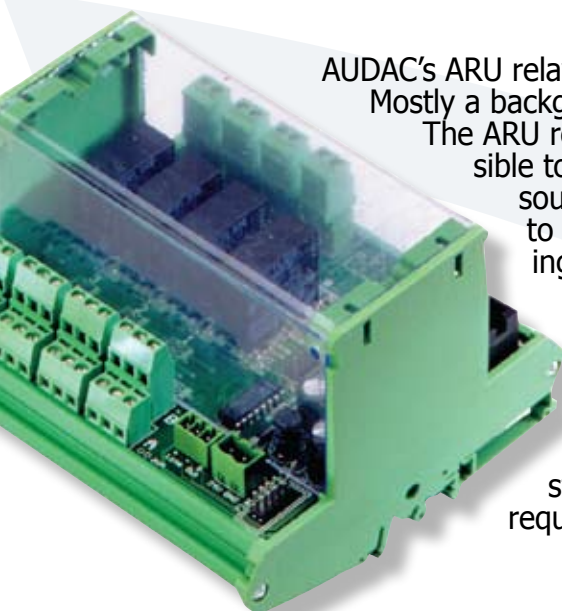
Digital paging microphone for 16 zones

Relay Groups

ARU

AUDAC's ARU relays modules are designed to switch between 2 input signals. Mostly a background music signal and a priority call signal.

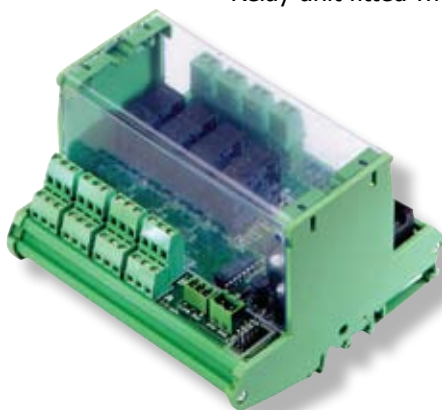
The ARU relays modules are composed in a flexible design. It is possible to connect different input sources, one per relay or 1 input source for all relays, or make a combination. The connections to achieve the required set up are made by placing or removing jumper connectors on the main board of the ARU relays module. There is a module with 4, 8 or 16 relays available, each with the same features. In case more relays are needed, the modules can be connected in cascade and individual addressing can be applied. All the ARU modules are suited to be mounted on a standard DIN rail, providing a connection strip for input signals and a connection strip for output signals and APM coats all your personal requirements.



ARU04

● Relay Group

Relay unit fitted with 4 switching relays



ARU08

● Relay Group

Relay unit fitted with 8 switching relays



ARU16

● Relay Group

Relay unit fitted with 16 switching relays



Relay Groups

AVD

The AUDAC AVD Relay modules are designed to route 1 common signal to 1 or more output connections. Like the ARU, the AVD is also available as a 4, 8 or 16 relay module. Though there is a difference in use.

The AVD are specially designed for switching applications, such as:

- Activate an "Emergency Call" relay on a standard volume control unit.
- Activate or deactivate teleprompters and (power) relay units for roll-down shutters, door contacts, etc.
- Switching delays for high power consuming audio systems, to start up the system step by step. The delay time can be set by means of a potentiometer.

In case more relays are needed, the modules can be connected in cascade and individual addressing can be applied. All the AVD modules are suited to be mounted on a standard DIN rail, providing a connection strip for input signals and a connection strip for output signals and APM consoles.



AVD04

● Relay Unit

Relay unit fitted with 4 switching relays



AVD08

● Relay Unit

Relay unit fitted with 8 switching relays



ARJ03

● Relay Unit

ARJ - RJ45 Junction Box



AVD16

● Relay Unit

Relay unit fitted with 16 switching relays



3-way RJ45 junction box, with an extra power connection. In case the connected cables are longer than 100 m, to avoid power failure of the system.

ARJ03P

● Relay Unit

ARJ - RJ45 Junction Box



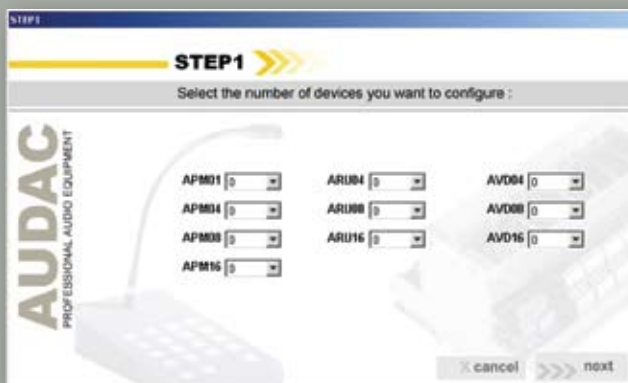
APM Software

Audac Paging System

To program AUDAC's APM consoles and ARU or AVD modules, the free to download software tool "Audac Configuration Manager"(see www.audac.be), is needed in combination with a RS232 to RS485 converter, such as ADAM-4520. The software provides the possibility to configure APM consoles and ARU or AVD modules, according to the desires and needs of the situation. The program is designed according to the "Wizard" principal, for easy step by step programming of the system, without overlooking or missing any necessary detail. Configuration can be saved as projects, and a listing of the settings can be printed for documentation purposes. On the APM consoles, the free programmable buttons can be configured for different functions as zone selection, message, power up delay, pulse relay and toggle relay. The APM16 console can be programmed with up to 3 configuration layers. On the ARU and AVD modules the output contacts can be defined. When these steps are completed, the system is ready for operation.



With a standard RS485 adapter



- Audac paging system software -



compatible with :



Mac OS X

Paging Systems

APM01 APM04 APM08 APM16

ARU/AVD04 ARU/AVD08 ARU/AVD16

	APM01/APM04/ APM08/APM16	ARU04 / AVD04	ARU08 / AVD 08	ARU16 / AVD16
Paging zones	1 / 4 / 8 / 16	n/a	n/a	n/a
Number of relays	n/a	4	8	16
Standard Data bus	RS485			
Microphone	Condenser	n/a	n/a	n/a
Polar pattern	Cardioide	n/a	n/a	n/a
Frequency range	150 - 12000 Hz	n/a	n/a	n/a
Output level	Programmable	n/a	n/a	n/a
Power supply	24V DC			
Power consumption	4,8 W	6 W	12 W	20 W
Connectors	RJ45			
Construction	Steel	Unbreakable plastic housing		
Fire Hazard class	n/a	VO (UL94)		
Mounting	Table Top	DIN Rail		
Dimensions (WxHxD)	120 x 55 x 190 mm	135 x 98 x 125 mm	205 x 98 x 125 mm	375 x 98 x 125 mm
Weight	1,1 Kg	0,380 Kg / 0,323 Kg	0,580 Kg / 0,500 Kg	1,160 Kg / 0,920 Kg
Colour	Grey RAL7016	Green, transparent		

ARJ03 ARJ03P

	ARJ03	ARJ03P
Digital control	n/a	n/a
Connectors	3 x RJ45	
Power supply	n/a	24 V DC
Construction	Unbreakable plastic housing	
Dimensions (WxHxD)	95 x 33 x 45 mm	95 x 48 x 45 mm
Weight	37 g	43 g
Colour	Green	

CPA22

Power Amplifier



AUDAC's CPA Series is a complete new line of professional 100V amplifiers. These newest members of the 19" Pro Sound Series family are specially designed for most common 100 Volt PA systems.

The CPA series is available in different powers, going from 2 x 120 Watt to 1 x 480 Watt and are designed to be used in combination with the AUDAC PRE series pre-amplifiers. Output power tapping are provided for use in 100 V, 70 V or even 4 Ohm low impedance installations. The CPA series is designed as a no nonsense 100 V power amplifier, with only the necessary controls and connectors on the back. This creates a great simplicity in use and installation. The standard 2 HE 19" construction enables the amplifier to be built in any standard 19" rack, without taking to much space.



On the front of the CPA22, for each channel, you can find only a series of indication led's per channel: a protection led to warn when the protection circuit kicks in to avoid damage to the amplifier, a Clip led to indicate when the signal is too strong and should be reduced, a -20 dB led to indicate when the signal reaches the -20 dB level and a signal led to check if there is a signal present on the appropriate channel per channel. Of course, the power button with a blue power indicator can be found here too.

Separate signal input and link output on balanced XLR connectors are provided for Channel 1 and 2. Each input signal has a turning knob to set the input level, combined with a High Pass Filter switch. All the output connections are fitted with a Terminal connection for 100 V, 70 V or 4 Ohm applications. Only 1 connection can be used at a time. Also a ground-lift switch is provided to avoid humming sound produced by ground loops. And of course the power connection can be found here too. For emergency purposes, the amplifier can also be powered, using the 24 V DC connection.

The AUDAC CPA22 delivers an output power of 2 x 120 Watt @ 100 V.

CPA24

Power Amplifier

The AUDAC CPA24 delivers an output power of 240 Watt @ 100 V.

On the front of the CPA24, you can find only a series of indication led's: a Protection led to warn when the protection circuit kicks in to avoid damage to the amplifier, a Clip led to indicate when the signal is too strong and should be reduced, a -20 dB led to indicate when the signal reaches the -20 dB level and a Signal led to check if there is a signal present. Of course, the power button with a blue power indicator can be found here too.



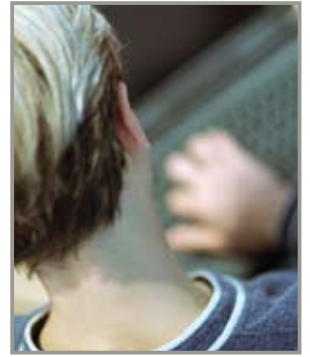
Separate signal input and link output on balanced XLR connectors are provided. The input signal has a turning knob to set the input level, combined with a High Pass Filter switch. The output connection is fitted with a Terminal connection for 100 V, 70 V or 4 Ohm application. Only 1 connection can be used at a time. Also a ground-lift switch is provided to avoid humming sound produced by ground loops. And of course the power connection can be found here too. For emergency purposes, the amplifier can also be powered, using the 24 V DC connection.

CPA48

Power Amplifier

The AUDAC CPA48 delivers an output power of 480 Watt @ 100 V.

COM12



Public Address Amplifier



The COM12 public address amplifier is developed as an easy to use, flexible solution for multi-functional use. During the development of the COM12 public address amplifier, the AUDAC-engineers wanted to achieve four goals:

- Delivering a flexible audio solution to control multiple functions.
- Easy to use
- Excellent sound quality
- A modern and advanced design

The COM12 has 2 stereo unbalanced line level inputs, 2 mono balanced line level inputs, 2 mono balanced microphone level inputs with priority settings and phantom power, 5 high impedance 100V mono output zones, 1 low impedance 4ohm mono output zone, a link input and output, an amp input and pre-amp output, a remote microphone input and the possibility to connect a telephone pager unit. The COM12 can be used in commercial applications such as restaurants, hotels, shops, warehouses, professional offices, public buildings ... As a simple example, when installed in a shop, you could connect: a tuner to play your favorite radio-station, a microphone to make announcements, a telephone pager ... and of course the shops doorbell.

COM12 Front

On the front you can find all the necessary controls to operate the amplifier: channel volume controls for channel 1 – 6, a 2 band tone control and the master volume control, a chime button, zone selection buttons pre zone and all zones, and the power switch.

Operation of the amplifier can be visually controlled by means of the indication led's: a blue "Power On" led, a 5 segment output VU bar and a red output clipping led.



COM12

Public Address **Amplifier**



On the back you can find all the necessary connections.

Channel 1 -2 are equipped with an input gain control, a priority and a phantom power switch and a XLR/6.3mm Jack balanced combination connector for microphone input. Channel 3 – 4 only have an input gain control and a XLR connector for microphone input. Channel 5 – 6 are equipped with an input gain control, stereo cinch connectors for line level signal input and a 6.3mm jack balanced connector for microphone input.

Further more you can find controls and/or connections for chime volume, remote microphone volume and input, music on hold volume and output and telephone paging input. For cascading purposes, amplifier input, pre-amplifier output, link input and link output are provided too.

The last section is for connection to the appropriate loudspeakers. 5 switchable 100V zones can be applied or one 4 Ohm low impedance zone. Never connect the 2 type's loudspeakers at the same time.



PRE16

Pre Amplifier



The AUDAC PRE series is a new line of pre-amplifiers to be used in combination with the AUDAC D Series, T Series, Q Series or CPA Series. The PRE Series is specially designed to meet the demands of the user, without making it too complicated. Each pre-amplifier contains 2 microphone inputs and 4 stereo line Inputs, to provide all the necessary connection possibilities.



The AUDAC PRE16 pre amplifier is constructed as a single zone stereo pre-amplifier and has all the necessary controls and connection possibilities.

On the front of the PRE16, a volume control and a Clip led indicator per channel to control the input levels can be found. For the output section, a 6 segment led bar, a master volume control and a 2 band tone control is provided, for controlling the output signal. Of course, the power button with a blue power indicator can be found here too.



At the back of the PRE16 all the necessary connections can be made, featuring 2 XLR microphone inputs in combination with a gain control, a 3 band tone control, a phantom power switch and a talk over switch per channel.

Channel 1 is constructed as a stereo line input channel, fitted with 2 balanced XLR connectors, a stereo/mono switch and a gain control.

Channel 2, 3 and 4 are constructed as stereo line input channels, each fitted with 2 RCA connectors and a gain control. The output section features 2 balanced XLR connectors and a stereo/mono switch. And of course the power connection can be found here too.

PRE26

Pre Amplifier

The AUDAC PRE26 pre amplifier is constructed as a dual zone stereo pre-amplifier and has all the necessary controls and connection possibilities.



On the front of the PRE26, a volume control and a Clip led indicator per channel to control the input levels can be found. Each input channel also feature 2 buttons and green indication led's to control the routing of the input signal. For the output section, a 6 segment led bar, a master volume control and a 2 band tone control is provided per output zone, for controlling the output signal. Of course, the power button with a blue power indicator can be found here too.



At the back of the PRE26 all the necessary connections can be made, featuring 2 XLR microphone inputs in combination with a gain control, a 3 band tone control, a phantom power switch and a talk over switch per channel. Channel 1 is constructed as a stereo line input channel, fitted with 2 balanced XLR connectors, a stereo/mono switch and a gain control. Channel 2, 3 and 4 are constructed as stereo line input channels, each fitted with 2 RCA connectors and a gain control. The output section features 2 balanced XLR connectors and a stereo/mono switch per output zone. And of course the power connection can be found here too.

D2

Power Amplifier



The AUDAC D2 delivers an output power of 2 x 200 Watt @ 8 Ohm and 2 x 300 Watt @ 4 Ohm. In bridged mode it can deliver a power of 600 Watt @8 Ohm.



On the front of the D series, for each channel, you can find a Volume control to set the individual volume per channel, a Signal led to check if there is a signal present on the appropriate channel, a Clip led to indicate when the signal is too strong and should be reduced, and a Protection led to warn when the protection circuit kicks in to avoid damage to the amplifier per channel. Of course, the power button with a blue power indicator can be found here too.



Each channel has its own separate signal input on balanced XLR connector, and an output on speaker connector. The D series can be set in stereo mode or bridged mode for channel 1 + 2, using the appropriate switch. Also a ground-lift switch is provided to avoid humming sound produced by ground loops. And of course the power connection can be found here too.

D3

Power Amplifier

The AUDAC D3 delivers an output power of 2 x 300 Watt @ 8 Ohm, 2 x 450 Watt @ 4 Ohm or even 2 x 600 Watt @ 2 Ohm. In bridged mode it can deliver a power of 900 Watt @8 Ohm and 1200 Watt @ 4 Ohm.



D4

Power Amplifier



The AUDAC D4 delivers an output power of 2 x 400 Watt @ 8 Ohm, 2 x 600 Watt @ 4 Ohm or even 2 x 800 Watt @ 2 Ohm. In bridged mode it can deliver a power of 1200 Watt @8 Ohm and 1600 Watt @ 4 Ohm.



On the front of the D series, for each channel, you can find a Volume control to set the individual volume per channel, a Signal led to check if there is a signal present on the appropriate channel, a Clip led to indicate when the signal is too strong and should be reduced, and a Protection led to warn when the protection circuit kicks in to avoid damage to the amplifier per channel. Of course, the power button with a blue power indicator can be found here too.



Each channel has its own separate signal input on balanced XLR connector, and an output on speaker connector. The D series can be set in stereo mode or bridged mode for channel 1 + 2, using the appropriate switch. Also a ground-lift switch is provided to avoid humming sound produced by ground loops. And of course the power connection can be found here too.

D5

Power Amplifier

The AUDAC D5 delivers an output power of 2 x 500 Watt @ 8 Ohm, 2 x 750 Watt @ 4 Ohm or even 2 x 1000 Watt @ 2 Ohm. In bridged mode it can deliver a power of 1500 Watt @8 Ohm and 2000 Watt @ 4 Ohm.



T2

Power Amplifier



AUDAC's T Series professional power amplifiers is a complete new line of AUDAC's 19" Pro Sound Series amplifiers, suitable for most common low impedance high power sound systems. The amplifiers are build as 2 channel amplifier + an extra channel to power a passive sub woofer cabinet. The amplifiers are fitted with a multi purpose protection circuit, which detects DC mall function, Short circuit, overheating, signal over load, and signal limiting. The T series is designed as a no nonsense amplifier, with only the necessary controls and connectors. This creates a great simplicity in use and installation.



On the front of the T2, for each channel, you can find a Volume control to set the individual volume per channel, a Signal led to check if there is a signal present on the appropriate channel, a Clip led to indicate when the signal is to strong and should be reduced, and a Protection led to warn when the protection circuit kicks in to avoid damage to the amplifier per channel. Of course, the power button with a blue power indicator can be found here too.



Separate signal input on balanced XLR connectors are provided for left and right input signals. Each input signal has a turning knob to set the cross-over frequency, with a range from 50 Hz to 250 Hz. These settings determine the signal for the Sub channel, to obtain the best possible sound. All the output connections are fitted with a speaker connection for the best possible contact. Also a ground-lift switch is provided to avoid humming sound produced by ground loops. And of course the power connection can be found here too.

T4

Power Amplifier

The AUDAC T4 delivers an output power of 2 x 400 Watt @ 8 Ohm and 2 x 600 Watt @ 4 Ohm for Left and Right. The sub-out can deliver a power of 1200 Watt @ 8 Ohm.



Q2

Power Amplifier

AUDAC's Q Series is a complete new line of 4 channel power amplifiers. These newest members of the 19" Pro Sound Series family are suitable for most common low impedance high power multi room systems. The amplifiers are built as 4 channel amplifiers, with possible bridged function. The amplifiers are fitted with a multi purpose protection circuit, which detects DC mall function, Short circuit, overheating, signal over load, and signal limiting. The Q series is designed as a no nonsense amplifier, with only the necessary controls and connectors. This creates a great simplicity in use and installation. The AUDAC Q2 delivers an output power of 4 x 200 Watt @ 8 Ohm and 4 x 300 Watt @ 4 Ohm. In bridge mode it can deliver a power of 2 x 600 Watt @ 8 Ohm.



On the front of the Q2, for each channel, you can find a Volume control to set the individual volume per channel, a Signal led to check if there is a signal present on the appropriate channel, a Clip led to indicate when the signal is too strong and should be reduced, and a Protection led to warn when the protection circuit kicks in to avoid damage to the amplifier per channel. Of course, the power button with a blue power indicator can be found here too.



Each channel has its own separate signal input on balanced XLR connector, and an output on speaker connector. The Q2 can be set in stereo mode or bridged mode for channel 1 + 2 and channel 3 + 4, using the appropriate switches. Also a ground-lift switch is provided to avoid humming sound produced by ground loops. And of course the power connection can be found here too.

Q2TR

Power Amplifier

The AUDAC Q2TR Line transformer unit is a new line of the AUDAC 19" Pro Sound Series. It is specially designed to be used in combination with the AUDAC Q2 power amplifier. This line transformer ensures that the 4 Ohm loudspeaker outputs of the AUDAC Q2 amplifier are changed for 50, 70 and 100 Volt applications. The Q2TR features 4 independent mono channels with a maximum input of 300 Watt @ 4 Ohm. The output per channel is rated at 100 V(33,33 Ohm), 70 V(16,33 Ohm) or 50 V(8,33 Ohm).



Q4

Power Amplifier



The AUDAC Q4 delivers an output power of 4 x 400 Watt @ 8 Ohm and 4 x 600 Watt @ 4 Ohm. In bridged mode it can deliver a power of 2 x 1200 Watt @ 8 Ohm.



On the front of the Q4, for each channel, you can find a Volume control to set the individual volume per channel, a Signal led to check if there is a signal present on the appropriate channel, a Clip led to indicate when the signal is too strong and should be reduced, and a Protection led to warn when the protection circuit kicks in to avoid damage to the amplifier per channel. Of course, the power button with a blue power indicator can be found here too.



Each channel has its own separate signal input on balanced XLR connector, and an output on speaker connector. The Q4 can be set in stereo mode or bridged mode for channel 1 + 2 and channel 3 + 4, using the appropriate switches. Also a ground-lift switch is provided to avoid humming sound produced by ground loops. And of course the power connection can be found here too.

Q4TR

Power Amplifier



The AUDAC Q4TR Line transformer unit is a new line of the AUDAC 19" Pro Sound Series. It is specially designed to be used in combination with the AUDAC Q4 power amplifier. This line transformer ensures that the 4 Ohm loudspeaker outputs of the AUDAC Q4 amplifier are changed for 50, 70 and 100 Volt applications. The Q4TR features 4 independent mono channels with a maximum input of 600 Watt @ 4 Ohm. The output per channel is rated at 100 V(16,66 Ohm), 70 V(8,16 Ohm) or 50 V(4,16 Ohm).

Amplifiers

CPA22-CPA24-CPA48

	CPA22	CPA24	CPA48
RMS Power @ 100 V	2 x 120 W	240 W	480 W
Output Impedance or Voltage	100 V / 70 V / 4 Ohm		
THD+N by 1 kHz	< 0,1%		
Signal to Noise ratio	90 dB@1kHz		
Power Supply	240V AC, 50-60Hz or 24 V DC		
Construction	Steel		
Dimensions (W x H x D)	483 x 90 x 385 mm		
Unit height	2 HE		
Weight	17 Kg	19 Kg	22 Kg
Colour	Black		

COM12

	COM12
RMS Power @ 100 V	120 W
Sensitivity :	
Balanced Microphone Channels	-50dB±3dB
Balanced Line Channels	-22dB±3dB
Balanced Remote Microphone station	-50dB±3dB
Balanced Telephone Paging	-21dB±3dB
Unbalanced Link in	-17dB±3dB
Unbalanced Amp in	-0dB±3dB
Frequency Response	+1.5dB / -3dB
THD+N by 1 kHz	< 0.5%
Signal to Noise ratio	90 dB@1kHz
Phantom Power	+15V DC
Zone outputs 1-5	100V / 83ohm
Power Supply	240V AC, 50-60Hz
Max power consumption	170W
Dimensions (W x H x D)	420 mm x 88mm x 320mm
Unit height	2HE
Weight	9.76 kg

Amplifiers

PRE16-PRE26

	PRE16	PRE26
Frequency Response	20 Hz - 20 kHz	
THD+N	< 0,1%	
Signal to Noise Ratio	> 90 dB	
Input Sensitivity	Mic1-2 1,0 mV	
	Ch1 1,0 mV	
	Ch2-4 200 mV	
Input Impedance	Mic1-2 600 Ohm balanced XLR	
	Ch1 2 x 600 Ohm Balanced XLR	
	Ch2-4 47 kOhm Unbalanced RCA/Cinch	
Output Level	1,2 V	
Output Impedance	2 x 600 Ohm Balanced XLR	4 x 600 Ohm Balanced XLR
Power Supply	240 V AC / 50-60 Hz	
Construction	Steel	
Mounting	19" rack	
Dimensions (WxHxD)	483 x 45 x 380 mm	
Unit Height	1 HE	
Weight	3,5 Kg	4,0 Kg
Colour	Black	

D2-D3-D4-D5

	D2	D3	D4	D5
RMS Power @ 8 Ohm	2 x 200 W	2 x 300 W	2 x 400 W	2 x 500 W
RMS Power @ 4 Ohm	2 x 300 W	2 x 450 W	2 x 600 W	2 x 750 W
RMS Power @ 2 Ohm	n/a	2 x 600 W	2 x 800 W	2 x 1000W
RMS Power @ 8 Ohm bridged	600 W	900 W	1200 W	1500 W
RMS Power @ 4 Ohm bridged	n/a	1200 W	1600 W	2000 W
THD+N	<0,05% @ 8 Ohm 1 Khz			
Signal to noise ratio	> 93 dB			
Slew rate	40 V / µsec			
Frequency response	20 Hz - 20 kHz			
Input Impedance	20 kOhm balanced , 10 kOhm unbalanced			
Cross Talk	> 70 dB @ 8 Ohm 1 kHz			
Input sense	0,775 V			
Damping factor	> 200	> 200	> 400	> 400
Power supply	240 V AC / 50 Hz - 60 Hz			
Protection	DC ; Short circuit ; Overheating ; Over load ; Signal limiting			
Construction	Steel			
Dimensions (WxHxD)	483 x 90 x 385 mm			
Unit height	2 HE	2HE	2HE	2HE
Weight	21,3 Kg	22,7 Kg	24,0 Kg	26,0 Kg
Colour	Black			

Amplifiers

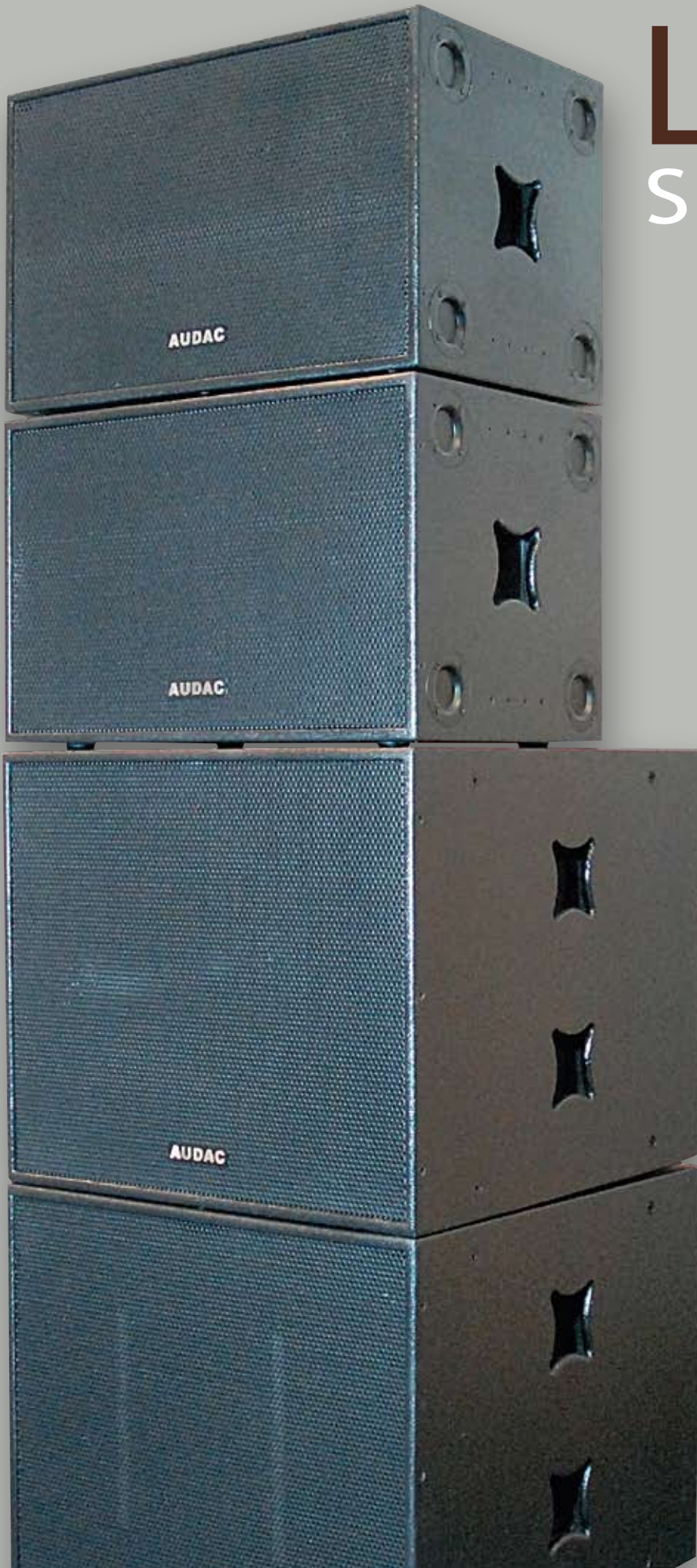
T2-T4-Q2-Q4

	T2	T4	Q2	Q4
RMS Power @ 8 Ohm	2 x 200 W + 400 W	2 x 400 W + 800 W	4 x 200 W	4 x 400 W
RMS Power @ 4 Ohm	2 x 300 W + 600 W	2 x 600 W + 1200 W	4 x 300 W	4 x 600 W
RMS Power @ 2 Ohm	2 x 600 W	2 x 1200 W	4 x 600 W	4 x 1200 W
RMS Power @ 8 Ohm bridged	n/a	n/a	2 x 600 W	2 x 1200 W
RMS Power @ 4 Ohm bridged	n/a	n/a	n/a	n/a
THD+N	<0,05% @ 8 Ohm 1 KHz			
Signal to noise ratio	> 93 dB			
Slew rate	40 V / μ sec			
Frequency response	20 Hz - 20 kHz			
Input Impedance	20 kOhm balanced , 10 kOhm unbalanced			
Cross Talk	> 70 dB @ 8 Ohm 1 kHz			
Input sense	0,775 V			
Damping factor	> 400			
Power supply	240 V AC / 50 Hz - 60 Hz			
Protection	DC ; Short circuit ; Overheating ; Over load ; Signal limiting			
Construction	Steel			
Dimensions (WxHxD)	483 x 90 x 385 mm			
Unit heigth	2 HE			
Weight	25,0 Kg	28,0 Kg	24,0 Kg	28,0 Kg
Colour	Black			

Q2TR-Q4TR

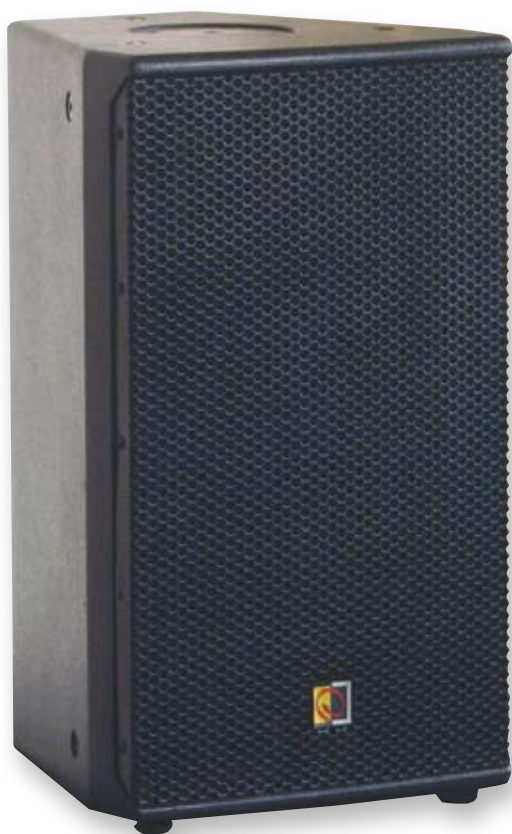
	Q2TR	Q4TR
Maximum power load	4 x 300 W	4 x 600 W
100 V tapping	100 V (33,33 Ohm)	100 V (16,66 Ohm)
	70 V (16,33 Ohm)	70 V (8,16 Ohm)
	50 V (8,33 Ohm)	50 V (4,16 Ohm)
Construction	Steel	
Dimensions (WxHxD)	483 x 90 x 385 mm	
Unit heigth	1 HE	2 HE
Weight	20,0 Kg	32,0 Kg
Colour	Black	

LOUD Speakers



PX Indoor Speakers

The AUDAC PX series cabinets are a new generation compact full range loudspeakers to be used especially for small and medium fixed indoor installations. They deliver a clear and natural sound. The PX series have an MDF wooden enclosure with scratch free durable structure black painting and ergo grips. Built in embedded steel L-tracks provide convenient multi axis suspension and together with the 2 extra attachment points for an optional suspension bracket, all possible mounting positions are covered. With the rigging-set, it's possible to fly the loudspeaker. All speakers are provided with an internal speaker pole flange adapter for easy installation and set up. To protect the speakers during transportation and use, bag covers are available for each speaker individually.



PX108

● Indoor Speaker

Indoor speaker cabinet

The PX108 has a 1" HF driver and an 8" medium frequency range loudspeaker with a coverage pattern of 90 x 60° and is designed to work vertical as well as horizontal

i Indoor Speakers



PX110

● Indoor Speaker

Indoor speaker cabinet

The PX110 has a 1" HF driver and a 10 medium frequency range loudspeaker with a coverage pattern of 90 x 60° and is designed to work vertical as well as horizontal.



PX112

● Indoor Speaker

Indoor speaker cabinet

The PX112 has a 1.3" HF driver and a 12" low medium frequency loudspeaker with a coverage pattern of 90 x 60° and is designed to work vertical as well as horizontal.



i Indoor Speakers

The PX115 has a 1.3" HF driver and a 15" low frequency range loudspeaker with a coverage pattern of 90 x 75° and is designed to work vertical as well as horizontal.



RX rear



PX115

● **Indoor Speaker**

Indoor speaker cabinet

Brackets

The Audac loudspeaker wall brackets are available for the PX series only, and will help you to mount your speaker in a simple and secure way on any wall or ceiling. They are constructed of strong materials and come with the necessary parts, such as a screw flange adapter to replace the speaker pole flange adapter in the bottom of the speaker, 2 bolts M10 and safety strain with M10 eye bolt for safe mounting.



MBK108

● Wall Bracket

U shaped wall bracket for PX108, including mounting parts

MBK110

● Wall Bracket

U shaped wall bracket for PX110, including mounting parts

MBK112

● Wall Bracket

U shaped wall bracket for PX112, including mounting parts

MBK115

● Wall Bracket

U shaped wall bracket for PX115, including mounting parts

Cover Bags

For the protection and handling of the PX series and RX series loudspeakers, smart bag covers are designed to cover all possible situations. The bags are made of extra strong water repelling polyester with heavy duty stitching and small rubber feet. Openings to reach the connections, to place the speaker on a stand and to be able to carry the speaker, using the speakers handles are made and can be covered with a stitched on flap of the same material when not used. The front of the bag can be opened to use the speaker without removing the bag.



CPB108P

● Cover Bag

Cover bag for PX108

CPB110P

● Cover Bag

Cover bag for PX108

CPB112P

● Cover Bag

Cover bag for PX112

CPB115P

● Cover Bag

Cover bag for PX115

RX Road Speakers

The AUDAC RX Series cabinets are a new generation of compact full range loudspeakers especially designed for indoor and outdoor live applications. The advantage of this system, combining state-of-the-art technology with revolutionary engineering design, is that it includes loudspeakers with high sensitivity and low distortions, which results in high fidelity sound. Based on a very solid plywood enclosure with a scratch free durable polyurethane black coating, the RX series are excellent on the road. Its multi angled enclosure can be used arrayed, on a speaker stand, standing upright on the floor or as stage monitor. Built in embedded steel L-tracks provide convenient multi axis suspension. Their very compact size and ergonomic grips make the RX easy to handle and to transport. All speakers are provided with an internal speaker pole flange adapter for easy installation and set up. To protect the speakers during transportation and use, bag covers are available for each speaker individually.



RX112

● Road Speaker

Road speaker cabinet

The RX 112 contains a special modified constant directivity horn with 1.3 " HF compression driver and a 12 " high power low frequency loudspeaker and is designed to work in a vertical plan as well as in the horizontal plan, with a coverage pattern of 90° x 75°.



Road Speakers



RX115

● Road Speaker

Road speaker cabinet

The RX 115 contains a special modified constant directivity horn with 1.3 " HF compression driver and a 15 " high power low frequency loudspeaker and is designed to work in a vertical plan as well as in the horizontal plan, with a coverage pattern of 90° x 75°.



RX115 rear

CPB112R

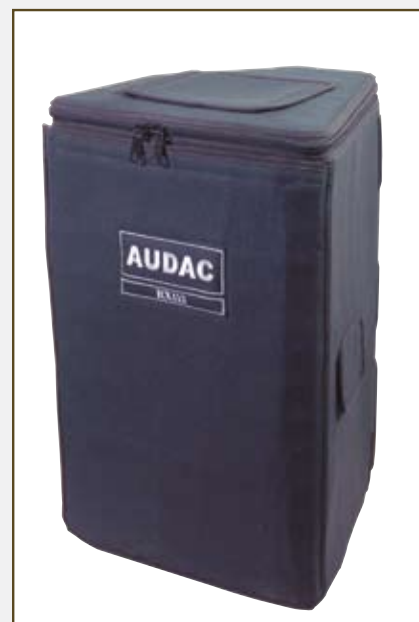
● Cover Bag

Cover bag for RX112

CPB115R

● Cover Bag

Cover bag for RX115



Cover bag for RX cabinet

Speaker Systems

RX112/RX115 PX108/PX110/PX112/PX115

	PX108	PX110	PX112	PX115	RX112	RX115
RMS Power	150 W	180 W	300 W	300 W	300 W	300 W
Max Power	300 W	350 W	600 W	600 W	600 W	600 W
Impedance	8 Ohm					
Sound pressure 1W / 1m	95 dB	98 dB	100 dB	100 dB	99 dB	
Sound pressure Max W / 1m	117 dB	120 dB	125 dB	125 dB	124 dB	
Frequency response @ -3 dB	95 Hz - 18 kHz	80 Hz - 18 kHz	70 Hz - 19 kHz	60 Hz - 19 kHz	75 Hz - 18 kHz	
frequency response @ -10 dB	70 Hz - 20 kHz	65 Hz - 20 kHz	55 Hz - 20 kHz	45 Hz - 20 kHz	60 Hz - 20 kHz	
Cross-over frequency	2,5 kHz		2 kHz			
Cross-over network	Passive built in					
Horizontal coverage	90°					
Vertical coverage	60°		75°			
Drivers	HF 1" / MF 8"	HF 1" / MF 10"	HF 1,3" / MF 12"	HF 1,3" / MF 15"	HF 1,3" / MF 12"	HF 1,3" / MF 15"
Connectors	2 x speakon ML4MP					
Construction	Plywood with textured polyurethane black coating				Black coated MDF	
Handles	1 at the back		2 at the sides		1 at the top	
Front Finish	Perforated steel grill					
Flying points	6 x double M10					
Stand adapters	35 mm stand adapter in bottom					
Dimensions (WxHxD)	290 x 505 x 300 mm	315 x 545 x 320 mm	385 x 645 x 420 mm	435 x 765 x 495 mm	395 x 620 x 345 mm	450 x 720 x 390 mm
Weight	8 Kg	17 Kg	31 Kg	34 Kg	23 Kg	29 Kg
Accessories	Bag cover CPB108P	Bag cover CPB110P	Bag cover CPB112R	Bag cover CPB115P	Bag cover CPB112R	Bag cover CPB115R
	Fly-ware Caymon					
	Wall bracket MBK108	Wall bracket MBK110	Wall bracket MBK112	Wall bracket MBK115	n/a	n/a

Brackets

	MBK108	MBK110	MBK112	MBK115
Dimensions (WxHxD)	50 x 530 x 265 mm	50 x 570 x 275 mm	50 x 670 x 345 mm	50 x 790 x 365 mm
Thickness	5 mm			
Weight (including mounting parts)	2,64 Kg	2,74 Kg	3,22 Kg	3,54 Kg
Colour	Black			
Suited for	PX108	PX110	PX112	PX115

Cover Bags

	CPB108P	CPB110P	CPB112P	CPB115P	CPB112R	CPB115R
Dimensions (WxHxD)	315 - 170 x 520 x 315 mm	335 - 200 x 550 x 335 mm	420 - 235 x 650 x 390 mm	455 - 265 x 740 x 500 mm	405 - 140 x 635 x 360 mm	465 - 160 x 730 x 400 mm
Weight	0,846 Kg	0,929 Kg	1,199 Kg	1,272 Kg	1,350 Kg	1,467 Kg
Construction	Polyestther					
Colour	Black					
Suited for	PX108	PX110	PX112	PX115	RX112	RX115

Bass

Cabinets



SX Bass cabinets



AUDAC's SX series sub woofers are crafted, based on the need for a powerful bass reproduction without any loss of clarity and sound quality. To accomplish these needs, AUDAC decided to use a Tandem ported design.

The results of the carefully designed and tuned subwoofer is that the SX subwoofers are capable of a high power low frequency sound with exceptionally low distortion levels and a flat frequency response between 45 and 250 Hz. Accurate bass does not always sound spectacular, it sounds real. A really good sub will

integrate so seamlessly into your system that it will not draw attention to itself. Each subwoofer is specially designed for a certain range of music styles. The SX412 is best suited for classical music and jazz performances. The SX415 is best suited for all kinds of disco, rap, hip-hop and R&B music. The SX418 is the most powerful of them all and is designed for rock and more heavy music styles where an ultra low sound is preferred. AUDAC's SX12 is a special concept subwoofer, designed to upgrade a smaller sound system without subwoofer, using the same amplifier. The built-in head base makes it possible to combine the SX series subwoofer with any top cabinet of your choice. The subwoofer cabinet is constructed of 18 mm multiply hardwood and coated with scratch-free black durable structure paint for a long and satisfying lifetime.

SX12

● Bass Cabinet



The SX12 is a compact, light-weight 12" dual coil subwoofer cabinet, and the use of a passive crossover filter, with a cross over frequency of 150 Hz, makes it possible that a small PA-set can be driven by only one amplifier! This makes it an ideal solution for upgrading your PX108 or PX110 set to a fully fledged small PA-system, at a reasonable price. (Be aware that for connection, a 4 pole speaker cable, containing both left and right stereo signals is needed.)

Bass Cabinets



SX412

● Bass Cabinet

Single 12" subwoofer

The SX412 is a single 12" subwoofer with a power of 300 Watt RMS. The Sound pressure level is rated at 96 dB but it is capable of a maximum sound pressure level of 121 dB. With a flat frequency response between 45 – 250 Hz and a slight boost on 50 Hz, the jazz and classic music listeners will enjoy the sound.

SX415

● Bass Cabinet

Single 15" subwoofer

The SX415 is a single 15" subwoofer with a power of 500 Watt RMS. The Sound pressure level is rated at 99 dB but is capable of a maximum sound pressure level of 126 dB. With a flat frequency response between 45 – 250 Hz and a slide boost on 100 Hz. This sound is perfect for all sorts of disco music, rap, hip-hop and R&B.



solid grips

Bass Cabinets



SX418

● Bass Cabinet

Single 18" sub woofer

The SX418 is a single 18" subwoofer with an amazing power of 700 Watt RMS. The sound pressure level is rated at 100 dB but it is capable of a stunning maximum sound pressure level of 129 dB, still with an extremely flat frequency response between 35 – 250 Hz! This makes it a unique subwoofer best suited for rock and more heavy music styles where an ultra low sound is preferred.

SX408A

● Active Bass Cabinet

The newest member in the SX series family is the SX408A active subwoofer. This subwoofer, with its own built in amplifier of a merely 150W and a well constructed 8" subwoofer is capable of producing an incredible powerful and clear bass sound. The very narrow design makes it suitable for unobtrusive installation on the ground, and makes it very easy to hide away. The optional MBK408 wall bracket provides the possibility to install the SX408A on almost any wall.



MBK408

● Mounting Bracket

FX3.12

3-way low driver cabinet

AUDAC 's NEW FX Series is a high quality, high power speaker system for professional use. The FX Series is a compact and flexible speaker system with a stunning sound and unbelievable power.

The AUDAC FX3.12 is a 3-way high output, active-driven, compact mid/high/mid-bass speaker module. The FX3.12 speaker system benefits from being designed to operate exclusively above 100 Hz. By optimizing the ideal operating band pass of each system component, the FX3.12 can achieve extremely high output levels consistently and safely. The FX3.12 features a mid/high integrated horn design and can be rotated 90°, allowing for complete flexibility in selection of vertical, horizontal and left / right system set up. The FX3.12 is a very compact enclosure featuring a number of ergonomically designed components that make it a light, small, and easy speaker to set up and use. There are four industrial grade, internal braces placed at each corner. Each brace is held in place by four M6 and two M10 bolts providing a wide range of installation and suspension flexibility as well as a Top hat-pole mount for use with Subwoofer satellite poles or tripod stands.



FX1.15

15" low driver cabinet

The FX1.15 is an extremely compact yet high output bass module designed as part of the AUDAC FX Series. The FX1.15 speaker system benefits from being designed exclusively to operate below 130 Hz. By optimizing the ideal operating band pass of each system component; the FX1.15 can achieve high output levels consistently and safely. Together with the FX3.12 they deliver high dynamic range providing new levels of clarity, depth and resolution. The FX1.15 is also easy to fly because there are four industrial-grade internal braces placed at each corner. Each brace is held in place by four M6 and two M10 bolts providing a wide range of installation and suspension flexibility.



FX2.15

dual 15" low driver cabinet



The FX2.15 is a compact, high output bass module designed as a component of the AUDAC FX Series. The FX2.15 was designed using new concepts in twin asymmetrical acoustic chambers that deliver very high speaker loading and output from a relatively small cabinet footprint. It is ideal for use in live applications that require reproduction of low frequencies with very high transient content. Together with the FX3.12 they deliver high dynamic range providing new levels of clarity, depth and resolution. The FX2.15 is also easy to fly because there are four industrial-grade internal braces placed at each corner. Each brace is held in place by four M6 and two M10 bolts providing a wide range of installation and suspension flexibility.

FX1.18

18" low driver cabinet



The FX1.18 is a high-output, horn-loaded single eighteen-inch bass module designed as a part of AUDAC FX Series. It provides tight, up-front, low frequency reinforcement with improved attack, definition and output. By optimizing the ideal operating band pass of each system component; the FX1.18 can achieve high output levels consistently and safely. Together with the FX 3.12 they deliver high dynamic range providing new levels of clarity, depth and resolution. The FX1.18 is also easy to fly because there are four industrial-grade internal braces placed at each corner. Each brace is held in place by four M6 and two M10 bolts providing a wide range of installation and suspension flexibility.



HS

Horn Speakers



The AUDAC HS series is a set of specially designed horn loaded speakers for quality long throw sound projection, to be applied in indoor and outdoor situations where long distances has to be covered without losing audibility and clarity. Its wide, smooth frequency response and high efficiency ensures high-fidelity music reproduction along with superb projection of clear, intelligible speech at very low distortion. These preferences makes the HS series the best choice to apply on athletic fields (like football, soccer, baseball, tennis, ...), small arenas, theme and amusements parks, fairgrounds, rodeos, air shows, racing tracks, skating rinks, convention centers, factories, warehouses, etc. The construction of the cabinet is specially designed to be able to use the speaker by stacking it or by flying , using the provided flying points and building it as an flying array. For flying purposes, AUDAC recommends CAYMON 's FLY-SYSTEM.



HS152

● Horn speaker

The HS152 is a full range horn loaded speaker for stacking or flying applications, with a 3" HF driver and an 15" MF driver. The output power is rated at 500W RMS, but it can produce a max power of 1000W. A built in cross-over network with selectable settings is applied to use the HS152 as a full range speaker, or in combination with the HS181 low range speaker, making it a 2 way system.



HS181

● Horn speaker

The HS181 is a low range horn loaded speaker for stacking or flying applications, with an 18" LF driver. The output power is rated at 500W RMS, but it can produce a max power of 1000W. The HS181 is designed to be used in combination with the HS152 speaker.



HS

Horn Speakers



HS208/HS208T

● Horn speaker

This 2 way loudspeaker system is engineered to provide long throw full-range sound projection in a variety of outdoor and indoor applications. Its wide, smooth frequency response and high efficiency ensures high-fidelity music reproduction along with superb projection of clear, intelligible speech at very low distortion, and has a very special coverage pattern of 40° horizontally and vertically. The HS208/HS208T feature a 3" HF driver with a 8" LF loadspeaker combination for the best sound reproduction. They are available as standard 8 Ohm low impedance speakers (HS208), or as a 100V high impedance speaker(HS208T) with power tapping for 100 W, 50 W and 25 W for use in 100V amplifying systems. The speakers are constructed of very strong and durable polyester with a black textured polyurethane coating.



MBK208

● Wall bracket

Mounting bracket for the HS208/HS208T

HS

Horn Speakers



HS212/HS212T

● Horn speaker

This 2 way loudspeaker system is engineered to provide long throw full-range sound projection in a variety of outdoor and indoor applications. Its wide, smooth frequency response and high efficiency ensures high-fidelity music reproduction along with superb projection of clear, intelligible speech at very low distortion and has a very special coverage pattern of 40° horizontally and vertically.

The HS212/HS212T feature a 3" HF driver with a 12" LF loadspeaker combination for the best sound reproduction. The speakers are available as standard 8 Ohm low impedance speakers (HS212), or as 100V high impedance speakers (HS212T) with power tapping for 300W, 150W and 75W for use in 100V amplifying systems.

The speakers are constructed of very strong and durable polyester with a black textured polyurethane coating.



MBK212

● Wall bracket

Mounting bracket for the HS212/HS212T

Bass Cabinets

SX12/SX412/SX415/SX418

	SX12	SX412	SX415	SX418
RMS Power	2 x 100 W	300 W	500 W	700 W
Max Power	2 x 200 W	600 W	1000 W	1400 W
Impedance	2 x 8 Ohm	8 Ohm		
Sound pressure 1W / 1m	95 dB	96 dB	99 dB	100 dB
Sound pressure Max W / 1m	118 dB	121 dB	126 dB	129 dB
Frequency response @ -3 dB	45 Hz - 250 Hz			35 Hz - 250 Hz
frequency response @ -10 dB	42 Hz - 250 Hz	40 Hz - 250 Hz	35 Hz - 250 Hz	25 Hz - 250 Hz
Cross-over frequency	150 Hz	n/a	n/a	n/a
Cross-over network	Passive built in	n/a	n/a	n/a
Drivers	2 x 12"	1 x 12"	1 x 15"	1 x 18"
Connectors	3 x speakon ML4MP (1 in / 2 out)	2 x speakon ML4MP		
Construction	Plywood with textured polyurethane black coating			
Handles	2 integrated in the cabinet			
Front Finish	Open			
Colour	Black			
Stand adapters	M10 screw flange speaker adapter built in top.			
Dimensions (WxHxD)	420 x 600 x 540 mm	380 x 700 x 600	430 x 800 x 650	540 x 750 x 730
Weight	32 Kg	32 Kg	43 Kg	54 Kg
Accessories	speaker pole flange adapter for 35 mm tubes			

SX408A

	SX408A
RMS Power	150 W
Max Power	300 W
Impedance	6 Ohm
Cross-over frequency	50 Hz - 250 Hz
Cross-over network	Active built in
Power Supply	240 V AC - 50/60 Hz
Drivers	8"
Connectors	XLR
Construction	Plywood with textured polyurethane black coating
Colour	Black
Dimensions (WxHxD)	250 x 420 x 705 mm
Weight	22,5 Kg
Accessories	MBK408 Wall Bracket

Bass Cabinets

FX3.12/FX1.15/FX1.18/FX2.15

	FX3.12	FX1.15	FX1.18	FX2.15
RMS Power	100 W + 300 W	500 W		1000 W
Max Power	200 W + 600 W	1000 W		2000 W
Impedance	8 Ohm + 8 Ohm	8 Ohm		4 Ohm
Sound pressure 1W / 1m	105 dB	99 dB	104 dB	104 dB
Sound pressure Max W / 1m	134 dB	129 dB	134 dB	137 dB
Frequency response @ -3 dB	150 Hz - 18 kHz	40 Hz - 200 Hz	38 Hz - 150 Hz	40 Hz - 220 Hz
frequency response @ -10 dB	100 Hz - 20 kHz	35 Hz - 220 Hz	32 Hz - 200 Hz	35 Hz - 250 Hz
Cross-over frequency	130 Hz/500 Hz/ 2,5 kHz	80 Hz - 150 Hz	80 Hz - 130 Hz	80 Hz - 150 Hz
Cross-over network	passive built in			
Horizontal coverage	90°	n/a	n/a	n/a
Vertical coverage	40°	n/a	n/a	n/a
Drivers	1 3/4" HF + 6" MF + 12"LF	15" LF	18" LF	2 x 15" LF
Connectors	2 x speakon ML4MP			
Construction	Plywood with textured polyurethane black coating			
Handles	2, integrated in cabinet sides		4, integrated in cabinet sides	
Front Finish	Perforated steel grill			
Flying points	2 top strips + 2 bottom strips + 1 back strip		8 double M10	
Dimensions (WxHxD)	720 x 462 x 450 mm		720 x 610 x 740 mm	
Weight	35,5 Kg	31 Kg	52 Kg	69 Kg
Accessories	Fly-ware Caymon			

Horn Speakers

HS152/HS181/HS208/HS212

	HS152	HS181	HS208	HS212
RMS Power	500 W		150 W	350 W
Max Power	1000 W		300 W	700 W
Impedance	8 Ohm			
Sound pressure 1W / 1m	110 dB	98 dB	tba	110 dB
Sound pressure Max W / 1m	137 dB	125 dB	tba	136 dB
Sound pressure 100V Max W / 1m	n/a	n/a	n/a	n/a
Frequency response @ -3 dB	70 Hz - 17 kHz	45 Hz - 250 Hz	tba	80 Hz - 18 kHz
frequency response @ -10 dB	60 Hz - 19 kHz	35 Hz - 300 Hz	tba	65 Hz - 20 kHz
Cross-over frequency	1,5 kHz	n/a	1,5 kHz	
Cross-over network	Passive built in	n/a	Passive built-in	
Horizontal coverage	40°			
Vertical coverage	60°		40°	
Drivers	3" HF / 15" LF	18" LF	3" HF / 8" LF	3" HF / 12" LF
Connectors	1 x Speakon ML1 x speakon ML4MP , 2 x speakon ML8MP	2 x speakon ML4MP		
Construction	Plywood with textured polyurethane black coating		Polyesther with textured polyurethane black coating	
Handles	4, integrated in cabinet		n/a	n/a
Front Finish	Perforated steel grill			
Flying points	2 front strips + 2 back rails		n/a	n/a
Dimensions (WxHxD)	590 x 580 x 660 mm	590 x 610 x 580 mm	360 x 455 x 360 mm	510 x 710 x 510 mm
Weight	54 Kg	43 Kg	12,30 Kg	28,00 Kg
accessories	Fly-ware Caymon			
			MBK208 Wall bracket	MBK212 Wall bracket
Colour	Black			

Horn Speakers

HS208T/HS212T

	HS208T	HS212T
RMS Power	n/a	n/a
Max Power	n/a	n/a
Impedance	8 Ohm	
Line transformer power tapings	100 Ohm / 100 W	33 Ohm / 300 W
	200 Ohm / 50 W	66 Ohm / 150 W
	400 Ohm / 25 W	133 Ohm / 75 W
Sound pressure 1W / 1m	tba	110 dB
Sound pressure Max W / 1m	n/a	n/a
Sound pressure 100V Max W / 1m	tba	134,8 dB
Frequency response @ -3 dB	tba	80 Hz - 18 kHz
frequency response @ -10 dB	tba	65 Hz - 20 kHz
Cross-over frequency	1,5 kHz	
Cross-over network	Passive built-in	
Horizontal coverage	40°	
Vertical coverage	40°	
Drivers	3" HF / 8" LF	3" HF / 12" LF
Connectors	2 x speakon ML4MP	
Lenght connection cable	n/a	n/a
Construction	Polyester with textured polyurethane black coating	
Front Finish	Perforated steel grill	
Dimensions (WxHxD)	360 x 455 x 360 mm	510 x 710 x 510 mm
Weight	12,30 Kg	28,00 Kg
Accessories	MBK208 Wall bracket	MBK212 Wall bracket
	Fly-ware Caymon	
Colours	Black	

MBK208/MBK212

	MBK208	MBK212
Dimensions (WxHxD)	108 x 328 x 285 mm	108 x 423 x 554 mm
Thickness	4 mm	
Weight (including mounting parts)	3,32 Kg	4,72 Kg
Colour	Black	
Suited for	HS208 / HS208T	HS212 / HS212T

WX

Wall speakers



The AUDAC WX series speakers are powerful 2-way performance speakers, built in a synthetic enclosure, to make the speaker suitable for all purposes, going from standard home indoor installation to specialized indoor design appliances. Due to the construction, the speaker can be mounted vertically or horizontally, using the included wall bracket, and is available in 3 different colours (black, white or silver), to make the speaker blend in with the environment. By means of a recessed adjuster screw at the rear of the speaker, the power tapping can be set in 3 adjustable steps of impedance for 100V and 1 step for 8 Ohm standard low impedance applications.

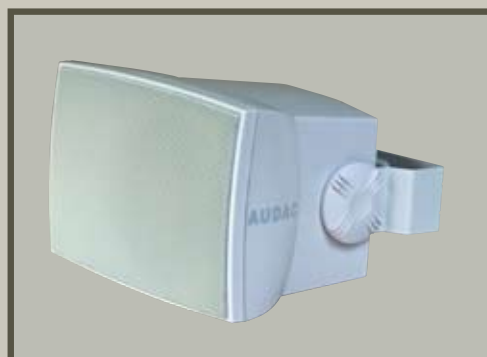


WX302

● Ceiling Speaker

Professional wall speaker

The AUDAC WX302 is a 2-way high performance loudspeaker with an 1" dome tweeter and a 3" low frequency loudspeaker.



WX

Wall speakers

The AUDAC WX series speakers are powerful 2-way performance speakers, built in a synthetic enclosure, to make the speaker suitable for all purposes, going from standard home indoor installation to specialized indoor design appliances. Due to the construction, the speaker can be mounted vertically or horizontally, using the included wall bracket, and is available in 3 different colours (black, white or silver), to make the speaker blend in with the environment. By means of a recessed adjuster screw at the rear of the speaker, the power tapping can be set in 3 adjustable steps of impedance for 100V and 1 step for 8 Ohm standard low impedance applications.



WX502

● Ceiling Speaker

Professional wall speaker

The AUDAC WX502 is a 2-way high performance loudspeaker with an 1" dome tweeter and a 5^{1/4} " low frequency loudspeaker.

WX802

● Ceiling Speaker

Professional wall speaker

The AUDAC WX802 is a 2-way high performance loudspeaker with an 1" dome tweeter and a 8" low frequency loudspeaker.



BX Performance speakers



The AUDAC BX series speaker is a powerful 2-way performance speaker, built in a synthetic ABS enclosure, to make the speaker suitable for indoor and outdoor appliances. The tweeter is overload protected by means of a thermal unit embedded in the built in cross over section. Due to the construction of the included wall bracket, the speaker can be mounted in any direction, and is available in 2 colours, black or white. The speaker is available as a standard 8 Ohm low impedance speaker (C version) or as a 100V speaker (T version). On the 100V speaker, the power tapping can be set by means of a recessed adjuster screw.

The BX series can be used either for background or for medium sized foreground systems or can be combined with AUDAC's SX series subwoofer loudspeakers.

BX5.2

● Performance Speaker

Professional wall speaker

Available versions :

BX5.2BC : Black , 8 Ohm

BX5.2BT : Black , 100 V

BX5.2WC: White , 8 Ohm

BX5.2WT : White , 100 V

The BX5.2 speaker is a powerful 2-way high performance loudspeaker, which features an 1" dome tweeter combined with a 5" low frequency loudspeaker.



BX5.2W



BX5.2B rear

WS

Wall speakers

The AUDAC WS500 is a design wall mounted loudspeaker with an aesthetically rounded form, made of white ABS and finished with a white varnished metal grid. Thanks to its special form as well as the entire aspect, the loudspeaker lends itself for applications where design matters. The WS500 has a very good reproduction for speech and music and features a moisture-proof broadband loudspeaker of 10 Watt. Fitted with a 100 V line transformer and with connections 10 W and 5 W.



WS500

● **Wall Speaker**

Professional wall speaker

WS In-wall speakers



The WS series loudspeakers are AUDAC's in-wall speakers, designed for any possible application. Wherever a sound system is needed without seeing the speakers, the WS series offers the best solution. Because of the use of high quality components, combined with the application of a standard 100V line transformer, the WS series is a range of speakers that can be used in any situation, if it is a standard low impedance Hi-Fi installation, or a larger 100V PA system. The WS series speakers are made of strong ABS, and equipped with the necessary installation clamps for easy mounting. The cone of the speaker is treated to be completely moisture-proof, so it can also be used in damp rooms or outside applications. The removable grill and the housing of the speaker can be painted, to blend in with the structure the speakers is built-in. Every speakers comes with an easy cut-out template, for easy install.



WS524

● In-wall Speaker

Professional ceiling speaker

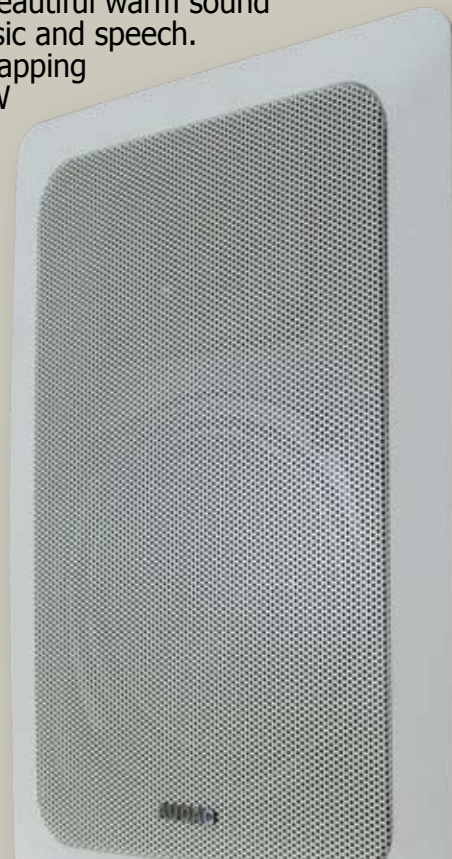
The WS524 is an elegant square in-wall loudspeaker for high quality installation. The loudspeaker combination used in this 2-way version is fitted with a 125 mm low frequency loudspeaker with a very powerful magnet and coaxially placed 1" silk soft dome high frequency tweeter. This combination ensures a beautiful warm sound reproduction for music and speech. The provided 100V tapping is : 24W – 12W – 6W

The WS624 is an elegant rectangular in-wall loudspeaker for high quality installation. The loudspeaker combination used in this 2-way version is fitted with a 125 mm low frequency speaker with a very powerful magnet and a 1" silk soft dome high frequency tweeter. This combination ensures a beautiful warm sound reproduction for music and speech. The provided 100V tapping is : 24W – 12W – 6W

WS624 WS624/D

● In-wall Speaker

Professional ceiling speaker



CS Ceiling speakers

The CS series loudspeakers are AUDAC's ceiling speakers, designed for any possible application. Wherever a sound system is needed without seeing the speakers, or in larger buildings where the sound has to be spread over a enormous space, the CS series offers the best solution. Because of the use of high quality components, combined with the application of a standard 100V line transformer, the CS series is a range of speakers that can be used in any situation, if it is a standard low impedance Hi-Fi installation, or a larger 100V PA system. The CS series speakers are made of strong ABS, and equipped with the necessary installation clamps for easy mounting. The cone of the speaker is treated to be completely moisture-proof, so it can also be used in damp rooms or outside applications. The removable grill and the housing of the speaker can be painted, to blend in with the structure the speakers is built-in. Every speakers comes with an easy cut-out template, for easy install.



CS55

● Ceiling Speaker

Professional ceiling speaker



CS65-CS65D

● Ceiling Speaker

Professional ceiling speaker



CS75

● Ceiling Speaker

Professional ceiling speaker



CS85

● Ceiling Speaker

Professional ceiling speaker

SUBwoofers



In addition to the CS series, AUDAC created the CS1000 10" in-wall/ceiling subwoofer speaker with a super slim design. With a built-in depth of merely 104 mm, you can fit the CS1000 into almost every wall or ceiling, and as all other CS speakers, the CS1000 can be painted to blend in with the structure the speaker is built-in. The CS1000 has a superb reproduction of the low frequencies and is therefore ideal to use in combination with your WS series in-wall or CS ceiling speakers. The CS1000 is made of strong ABS, and equipped with the necessary installation clamps for easy mounting. The cone of the speaker is treated to be completely moisture-proof, so it can also be used in damp rooms or outside applications. The CS1000 features a 10" low frequency range woofer with an output power of 100W RMS @ 8 Ohm, and a maximum power of 200W. It can produce a sound pressure level up to 114 dB and has a stunning frequency response of 28 Hz to 300 Hz, which is really low sound.

CS1000

● Ceiling Speaker

Professional ceiling speaker

CTR transformers

AUDAC's CTR Series is a line of easy to use 100 V Line transformers, to be use with standard low impedance speakers. The CTR Series is specially suited for ceiling applications.

CTR06

● Ceiling transformer

Professional ceiling transformer

100V line transformer, with max load of 6 Watt, to be placed on a ceiling.



CTR24

● Ceiling transformer

Professional ceiling transformer

100V line transformer, with max load of 24 Watt, to be placed on a ceiling.



i Cuban Speakers

The uniquely designed CUBAN square loudspeakers are flush-mounted ceiling and/or wall speakers, which provide high-quality, wide-dispersion sound while remaining as discreet as possible. Efficiency is very important for inside-wall applications. AUDAC's highly efficient Cuban series answers this need with its ability to generate great sound with very little power. In fact, the Cuban can generate sound from solid surfaces by utilizing only 3 to 25 watts. These high-performance speakers have a small-perforated designer grille and are ideal for office, boutiques, shops and hotel rooms and if used in combination with an AUDAC subwoofer the sound will be even better.

A built-in self resetting protection circuit guarantees a long lifetime without any loss of quality and power. The Cuban speakers are made of a strong metal housing, with easy mounting springs for quick and comfortable installation. The front shows a black aluminum grid embedded in an aluminum frame, giving the speaker a dazzling modern design. When an additional line transformer, like AUDAC's CTR06 or CTR24, is applied, the Cuban series speaker can perfectly be adapted in a 100V speaker line application.



CS2.1

● Design speaker

The CS2.1 Cuban speaker features a 2" full range loudspeaker with a shielded neodymium magnet, which is capable of producing up to 10 W RMS, with a maximum of 20 W.

CS3.1

● Design speaker

The CS3.1 Cuban speaker features a 3¹/₈" full range loudspeaker with a shielded neodymium magnet, which is capable of producing up to 20 W RMS, with a maximum of 40 W.



CS3.2

● Design speaker

The CS3.2 Cuban speaker features a 1" soft dome tweeter and a 3¹/₈" full range loudspeaker with shielded neodymium magnets, which are capable of producing up to 20 W RMS, with a maximum of 40 W.

HS120

Sound Projectors

HS120

● Sound projector

The HS120 is AUDAC's newest member in the sound projector family.

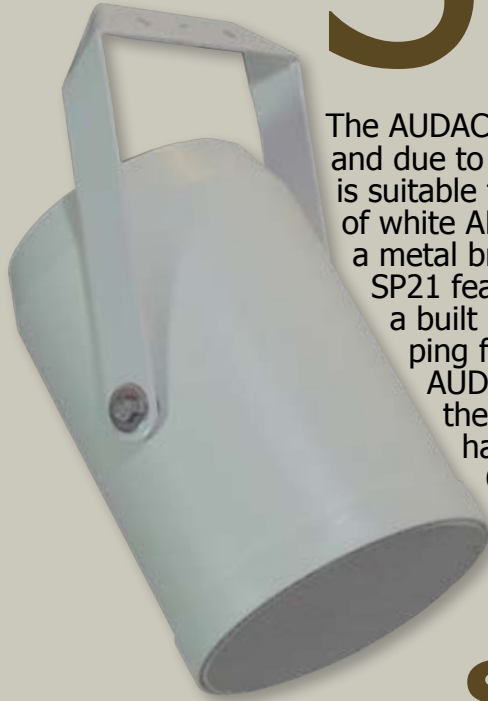
The HS120 is a special designed full range sound projector, to provide quality sound with a long throw range in a variety of indoor and outdoor applications. Its wide, smooth frequency response and high efficiency ensures high-fidelity music reproduction along with superb projection of clear, intelligible speech at very low distortion. The housing is made of the strongest ABS material, and is available in 2 colours: grey or green. These colours ensure a perfect blend with the most common situations the speaker is used in. As an additional safety, the speaker is equipped with an internal steel safety cable, which prevents the loudspeaker to fall, in case the housing is damaged or broken. The HS120 can be used in a standard 8 Ohm low impedance system with a power rating of 20 W RMS and a maximum power of 40 W, or in a 100V PA systems with tapping for 20 W, 10 W, 5 W or 2,5 W.



HS120G

● Sound projector

SP Sound projectors



The AUDAC SP21 is a humidity proof sound projector, and due to its good and powerful sound reproduction it is suitable for speech and music. The enclosure is made of white ABS, with a aluminum grill, including a metal bracket for easy wall mounting. The SP21 features a 4" full range speaker with a built in 100V line transformer, with tapping for 10 W, 5 W, 2,5 W or 1,25 W. The AUDAC SP21HA is the same speaker as the SP21, but to be used as a hanging speaker, hanging from its 5 m long connection cable. Of course, the length of the cable can be reduced to the desired length.



SP21

● Sound Projector

humidity-proof sound projector



SP21HA

● Sound Projector

humidity-proof sound projector



KYDO



Design column speaker

AUDAC introduces the brand new column speaker "KYDO", which is an all round 100 V column speaker with an extraordinary sound and a surprising high power. The KYDO is designed to be used in all applications where audibility of music and speech is of the most importance, like auditoria, churches, meeting and board rooms, etc. It features a single speakers section which can be set to different power taps that can be selected: 20 W, 10 W, 5 W, 2,5 W and 1,25 W. The KYDO features an aluminum housing, making it a light weight column speaker of approximately 2,5 Kg. For mounting the AUDAC KYDO, a special designed wall bracket is included, which makes it possible to focus the speaker in any direction, to obtain the best possible audibility.



AXIR

Design column speaker

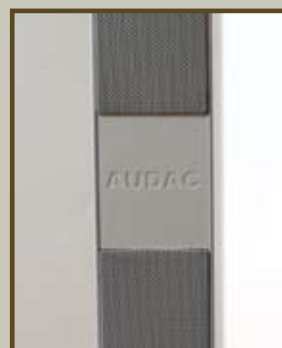
AUDAC introduces the brand new column speaker "AXIR", which is an all round 100 V column speaker with an extraordinary sound and a surprising high power.

The AXIR is designed to be used in all applications where audibility of music and speech is of the most importance, like auditoria, churches, meeting and board rooms, etc.

It features a double speakers section which can be set to different power taps individually, to create a specific polar pattern, best suited for the situation it is installed in.

The power taps that can be selected are: 20 W, 10 W, 5 W, 2,5 W and 1,25 W per speaker section. This makes a maximum of 40 W and a minimum of 2,5 W in 100V applications. The AXIR features an aluminum housing, making it a light weight column speaker of approximately 4 Kg.

For mounting the AUDAC AXIR, a special designed wall bracket is included, which makes it possible to focus the speaker in any direction, to obtain the best possible audibility.



Ceiling Speakers

CS55/CS58/CS65/CS65/D

	CS55	CS58	CS65	CS65/D
RMS Power	10 W		20 W	
Max Power	20 W		40 W	
Impedance	8 Ohm			
Line transfo power tapping	1600 Ohm / 6 W			
	3300 Ohm / 3 W			
	6600 Ohm / 1,5 W			
Sound pressure 1W / 1m	93 dB	90 dB	93 dB	
Sound pressure max W / 1m	100,8 dB	97,8 dB	100,8 dB	
Frequency response -3 dB	Fo - 14 kHz		Fo - 18 kHz	
Frequency response -10 dB	Fo - 16 kHz		Fo - 20 kHz	
Cross-over frequency	n/a	n/a	n/a	
Drivers	110 mm full range		120 mm full range	
Dimensions (WxHxD)	205 x 70 x 205 mm	215 x 145 x 215 mm	205 x 70 x 205 mm	
Weight	0,70 Kg	1,25 Kg	1,06 Kg	
Outside measurement	205 mm	215 mm	205 mm	
Built-in depth	70 mm	160 mm	80 mm	
Cut out measurement	165 mm	175 mm	165 mm	
Construction	ABS	ABS front with steel fire protection cover	ABS	
Front Finish	White aluminum grill			
Colour	White RAL 9010			
Accessories				
Option	Painted in other Ral colour			

CS75/CS85/CS1000

	CS75	CS85	CS1000
RMS Power	40 W	30 W	100 W
Max Power	80 W	60 W	200 W
Impedance	8 Ohm		
Line transfo power tapping	400 Ohm / 24 W		n/a
	800 Ohm / 12 W		n/a
	1600 Ohm / 6 W		n/a
Sound pressure 1W / 1m	97 dB	94 dB	88 dB
Sound pressure max W / 1m	110,8 dB	107,8 dB	108 dB
Frequency response -3 dB	Fo - 18 kHz		50 Hz - 250 Hz
Frequency response -10 dB	Fo - 20 kHz		28 Hz - 300 Hz
Cross-over frequency	2,5 kHz		250 Hz
Drivers	25 mm HF coaxia + 120 mm LF	25 mm HF coaxial+ 180 mm LF	10" LF
Dimensions (WxHxD)	205 x 90 x 205 mm	275 x 90 x 275 mm	304 x 104 x 304 mm
Weight	1,25 Kg	1,42 Kg	3,60 Kg
Outside measurement	205 mm	275 mm	304 x 304 mm
Built-in depth	100 mm	100 mm	104 mm
Cut out measurement	167 mm	240 mm	270 x 270 mm
Construction	ABS		
Front Finish	White aluminum grill		
Colour	White RAL 9010		
Accessories			Mounting brace included
Option	Painted in other Ral colour		

Wall Speakers

WX302/WX502/WX802

	WX302	WX502	WX802
RMS Power	30 W	50 W	70 W
Max Power	60 W	100 W	140 W
Impedance	8 Ohm		
Line transfo power tapings	500 Ohm / 20 W	250 Ohm / 40 W	165 Ohm / 60 W
	1000 Ohm / 10 W	500 Ohm / 20 W	330 Ohm / 30 W
	2000 Ohm / 5 W	1000 Ohm / 10 W	660 Ohm / 15 W
Sound pressure 1W / 1m	85 dB	87 dB	89 dB
Sound pressure max W / 1 m @ 8 Ohm	100 dB	102 dB	106 dB
Sound pressure max W / 1 m @ 100V	95 dB	104 dB	108 dB
Frequency response -3 dB	90 Hz - 18 kHz	70 Hz - 18 kHz	60 Hz - 17 kHz
Frequency response -10 dB	60 Hz - 20 kHz	55 Hz - 20 kHz	50 Hz - 20 kHz
Cross-over frequency	2500 Hz		2400 Hz
Horizontal coverage	110°		
Vertical coverage	110°		
Drivers	1" HF + 3" LF	1" HF + 5 ^{1/4} " LF	1" HF + 8" LF
Dimensions (WxHxD)	199 x 129 x 120 mm	212 x 147 x 136 mm	270 x 360 x 215 mm
Weight	1,66 Kg	2,52 Kg	7,5 Kg
Construction	ABS		
Front Finish	aluminum grill		
Accessories included	Wall bracket		
Colours	Black RAL9005 - WX302/B	Black RAL9005 - WX502/B	Black RAL9005 - WX802/B
	White RAL9010 - WX302/W	White RAL9010 - WX502/W	White RAL9010 - WX802/W
	Silver RAL 9006 - WX302/S	Silver RAL 9006 - WX502/S	Silver RAL 9006 - WX802/S

CS2.1/CS3.1/CS3.2

	CS2.1	CS3.1	CS3.2
RMS Power	10 W	20 W	
Max Power	20 W	40 W	
Impedance	8 Ohm		
Sound pressure 1W / 1m	85 dB	90 dB	86 dB
Frequency response	Fo - 20 kHz		
Drivers	2" full range	3 ¹ / ₈ " full range	1" HF + 3 ¹ / ₈ " LF
Dimensions (WxHxD)	102 x 102 x 90 mm	122 x 122 x 106 mm	193 x 122 x 106 mm
Weight	0,52 Kg	0,95 Kg	1,28 Kg
Built-in depth	100 mm	115 mm	115 mm
Cut out measurement	84 x 84 mm	104 x 104 mm	178 x 105 mm
Construction	Metal housing		
Front Finish	Brushed aluminum frame with black aluminum grill		
Colour	Brushed aluminum + Black		
Optional accessories	CTR06 or CTR24 100V transformer		

Wall Speakers

BX5.2

	BX5.2 C	BX5.2 D	BX5.2 T
RMS Power	40 W		n/a
Max Power	80 W		n/a
Impedance	8 Ohm	16 Ohm	8 Ohm
Line transformer power tap-pings	n/a	n/a	500 Ohm / 20 W
	n/a	n/a	1000 Ohm / 10 W
	n/a	n/a	2000 Ohm / 50 W
Sound pressure 1W / 1m	90 dB		
Sound pressure max W / 1 m @ 8 Ohm	106 W		n/a
Sound pressure max W / 1 m @ 100V	n/a	n/a	103 W
Frequency response -3 dB	80 Hz - 18 kHz		
Cross-over frequency	2500 Hz		
Horizontal coverage	90°		
Vertical coverage	90°		
Drivers	1" HF + 5" LF		
Dimensions (WxHxD)	165 x 280 x 150 mm		
Weight	2,5 Kg		2,7 Kg
Construction	ABS		
Front Finish	aluminum grill		
Accessories included	Wall bracket		
Colours	Black RAL9005 - BX5.2BC	Black RAL9005 - BX5.2BD	Black RAL9005 - BX5.2BT
	White RAL9010 - BX5.2WC	White RAL9010 - BX5.2WD	White RAL9010 - BX5.2WT

WS500/WS524/WS524/D/WS625/WS624D

	WS500	WS524	WS524/D	WS625	WS624/D
RMS Power	10 W	30 W			
Max Power	20 W	60 W			
Impedance	8 Ohm				
Line tmasfo power tappings	1000 Ohm / 10 W	n/a	400 Ohm / 24 W	n/a	400 Ohm / 24 W
	2000 Ohm / 5 W	n/a	800 Ohm / 12 W	n/a	800 Ohm / 12 W
		n/a	1600 Ohm / 6 W	n/a	1600 Ohm / 6 W
Sound pressure 1W / 1m	91 dB	92 dB			
Sound pressure max W / 1 m	n/a	109,8 dB	n/a	109,8 dB	n/a
Sound pressure 100V max W / 1 m	101 dB	n/a	105,8 dB	n/a	105,8 dB
Frequency response	110 Hz - 13 kHz	60 Hz - 20 kHz		60 Hz - 20 kHz	
Drivers	5 ^{1/2} " full range	1" HF coaxial + 4 ^{3/4} " LF		1" HF + 4 ^{3/4} " LF	
Outside measurement	n/a	180 x 180 mm		280 x 192 mm	
Built-in depth	n/a	85 mm		75 mm	
Cut out measurement	n/a	148 x 148 mm		245 x 158 mm	
Construction	ABS				
Front Finish	aluminum grill				
Dimensions (WxHxD)	240 x 340 x 100 mm	180 x 85 x 180 mm		280 x 75 x 192 mm	
Weight	1,62 Kg	1,30 Kg	1,40 Kg	1,62 Kg	1,72 Kg

Sound Projectors

CTR06/CTR24

	CTR06	CTR24
Max Power Load	6 W	24 W
Line transformer power tapings	1600 Ohm / 6 W	416 Ohm / 24 W
	3300 Ohm / 3 W	833 Ohm / 12 W
	6600 Ohm / 1,5 W	1600 Ohm / 6 W
Mounting	Ceiling	
Length connection cable	2 x 0,5 m	
Construction	Cardboard + metal grill	
Dimensions (WxHxD)	63 x 53 x 63 mm	
Weight	0,3 Kg	0,4 Kg
Colour	Black	

HS120

	HS120
RMS Power	20 W
Max Power	40 W
Impedance	8 Ohm
Line transformer power tapings	500 Ohm / 20 W
	1000 Ohm / 10 W
	2000 Ohm / 5 W
Sound pressure 1W / 1m	98 dB
Sound pressure Max W / 1m	114 dB
Sound pressure 100V Max W / 1m	111 dB
Frequency response @ -3 dB	180 Hz - 13 kHz
frequency response @ -10 dB	150 Hz - 15 kHz
Horizontal coverage	110°
Vertical coverage	60°
Drivers	4" full range
Connectors	Cable
Length connection cable	540 mm
Construction	ABS
Front Finish	aluminum grill
Dimensions (WxHxD)	220 x 160 x 230 mm
Weight	1,90 Kg
Accessories	Inox wall bracket
	included
Colours	HS120 - RAL7035 Grey
	HS120/G - RAL6002 Green

Design Speakers

AXIR/KYDO/SP21/SP21HA

	AXIR	KYDO	SP21	SP21HA
RMS Power	120 W	60 W	10 W	
Max Power	240 W	120 W	20 W	
Impedance	8 Ohm			
Line transformer power tapings	2 x 500 Ohm / 2 x 20 W	500 Ohm / 20 W	1000 Ohm / 10 W	
	2 x 1000 Ohm / 2 x 10 W	1000 Ohm / 10 W	2000 Ohm / 5 W	
	2 x 2000 Ohm / 2 x 5 W	2000 Ohm / 5 W	4000 Ohm / 2,5W	
	2 x 4000 Ohm / 2 x 2,5 W	4000 Ohm / 2,5 W	8000 Ohm / 1,25 W	
	2 x 8000 Ohm / 2 x 1,25 W	8000 Ohm / 1,25 W		
Sound pressure 1W / 1m	tba	tba	92 dB	
Sound pressure max W / 1 m @ 8 Ohm	tba	tba	104 dB	
Sound pressure max W / 1 m @ 100V	tba	tba	102 dB	
Frequency response	tba	tba	110 Hz - 18 kHz	
Horizontal coverage	170°		130°	
Lenght connection cable	n/a	n/a	660 mm	5000 mm
Construction	Aluminum		ABS	
Front Finish	Aluminum grill			
Drivers	12 x 2"	6 x 2"	4" full range	
Dimensions (WxHxD)	70 x 1005 x 105 mm	70 x 505 x 105	138 x 138 x 204 mm	
Weight	4,00 Kg	2,50 Kg	1,58 Kg	
Accessories included	Wall bracket		Steel wall bracket	n/a
Colours	White RAL 9010		White RAL 9010	
	Black RAL9005			



Vocal

Microphones

Vocal Microphones

Which can be used for several purposes

Perfect on Stage ...



M67

● Vocal Microphone

AUDAC's M67 is a multi purpose dynamic hand microphone. The high sensitive neodymium element makes the M67 a perfect microphone for presentation and singers. Due to the unidirectional (cardioid) polar pattern, the M67's feedback is reduced to a strict minimum. An integrated On/Off switch for practical use is provided.



M87

● Vocal Microphone

The AUDAC M87 is a super cardioid dynamic microphone which can be used for several purposes. The high sensitive neodymium element makes the M87 a perfect microphone for presentation and singers. Due to the unidirectional (cardioid) polar pattern, the M87's feedback is reduced to a strict minimum. An integrated On/Off switch for practical use is provided.

PDM100

● Paging Microphone

AUDAC's PDM100 paging microphone is a polyvalent dynamic gooseneck microphone, mounted on a solid base, and fitted with a 3 position switch: permanently on, momentary on and off. The PDM100 also contains an RC network for operation of chime modules.



MC50

● Microphone Windshield

Windshield black

Gooseneck Microphones

The AUDAC CMX series microphones are small and elegant electret gooseneck microphones. These are perfect microphones for good reproduction of speech and therefore suitable for conferences, church services and seminars. The cardioid polar pattern ensures a great microphone insensitivity to avoid feedback. The microphone is mounted on a flexible gooseneck, which allows the speaker a perfect placement of the microphone. The CMX Series feature balanced XLR connection and works on any phantom power of 9 to 52 Volt. These microphones are available in 2 lengths and are standard supplied with a black pop shield.

CMX55

• Gooseneck Condenser Microphone

Electret gooseneck microphone, with a total length of 55 cm.

CMX45

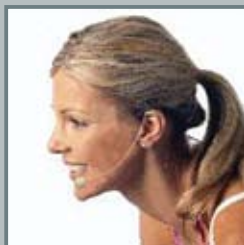
• Gooseneck Condenser Microphone

Electret gooseneck microphone, with a total length of 45 cm.

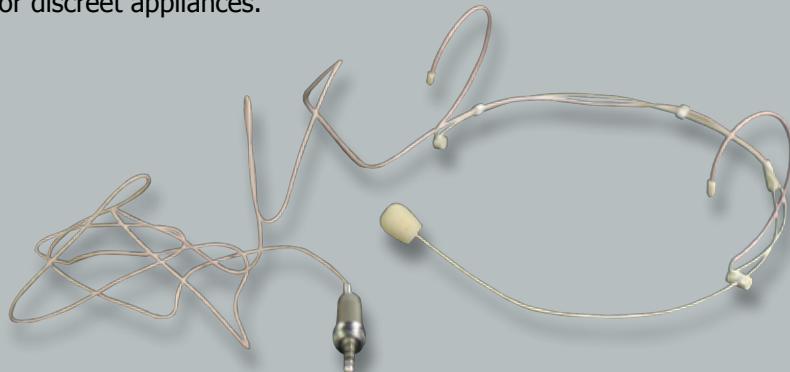


MC720

• Headset Condenser Microphone



The AUDAC MC720 Headset condenser microphone is the ideal microphone for any wireless microphone systems, where the user doesn't want a microphone in his hand. The placement of the microphone, directly near the speaker's voice, ensures a clear and high quality sound, without any problems of moving his head. The skin colour ensures a perfect blend of the microphone for discreet appliances.



Microphone Accessories

MP100

• Microphone Adapter

The MP100 by AUDAC is a simple to use power module for phantom power type condenser microphones; specially for headset and lavalier microphones. The MP100 features a mini-XLR input connector and XLR output connector.



APM

• Base for paging microphone

The APM microphone base is designed to use standard gooseneck microphones on any amplifier equipped with microphone inputs. On top there is a female XLR connector to mount the gooseneck microphone, and a male XLR connector at the back to connect the microphone cable. The APM microphone base features the same design as the APM paging microphones to fully blend in with the other equipment.



APT20

• Phantom Power Supply

The AUDAC APT20 is a 48 Volt phantom power supply unit for two condenser microphones. It features XLR connectors for input and output.



HM150

• Vocal Microphone

The AUDAC HM150 is a sturdy CB type hand-held paging microphone, with easy to use Push to talk switch at the side. This omni-directional dynamic microphone is designed for close talking applications, and is ideal for paging messages to all zones. The build-in 2-pole non latching switch activates the microphone when pressed. Removing pressure from the switch will automatically turn off the microphone. A metal wall mounting clip is provided with the microphone.



Transformers

TR1006

• Transformer

Universal 100 Volt/6 Watt line transformers for impedance matching between loudspeakers and amplifiers. The transformers have an over-dimensioned core, which limits saturation to a minimum and gives a remarkable improvement of the sound reproduction, especially in the low frequencies.



TR1010

• Transformer

Universal 100 Volt/10 Watt line transformers for impedance matching between loudspeakers and amplifiers. The transformers have an over-dimensioned core, which limits saturation to a minimum and gives a remarkable improvement of the sound reproduction, especially in the low frequencies.



ATU44

• Transformer



The AUDAC ATU44 is a universal input adaptor which can be used for all connections and extensions. The input level selector allows you to convert any amplifier output to any line-level output, balanced or unbalanced. (E.g.: You can convert a 100V loudspeaker signal into a balanced or unbalanced line level signal). The AUDAC ATU44 also makes it possible to convert unbalanced signal into balanced and vice versa. Often the AUDAC ATU44 is used to solve humm and buzz problems by means of the build-in audio transformer. This can be a perfect way to avoid ground loops.

Transformers

The AUDAC TR3000 Series is a line of 19" line transformer combination, and exists of the TR3000 installation plate, on which the desired TR3000 series line transformers can be mounted, and a range of 100 V line transformers with a power of 30 Watt up to 480 Watt.



TR3000

Transformer

The TR3000 is a 19" and 2HE installation plate to mount the TR3000 series line transformers. On this plate almost any combination of line transformers can be mounted, providing a stable and rigid construction for any 100V application.

TR3030

Transformer

The AUDAC TR3030 is a 100V line transformer with a power of 30 Watt, to be mounted on the TR3000 installation plate.

TR3040

Transformer

The AUDAC TR3040 is a 100V line transformer with a power of 40 Watt, to be mounted on the TR3000 installation plate.

TR3060

Transformer

The AUDAC TR3060 is a 100V line transformer with a power of 60 Watt, to be mounted on the TR3000 installation plate.

TR3080

Transformer

The AUDAC TR3080 is a 100V line transformer with a power of 80 Watt, to be mounted on the TR3000 installation plate.

TR3120

Transformer

The AUDAC TR3120 is a 100V line transformer with a power of 120 Watt, to be mounted on the TR3000 installation plate.

TR3240

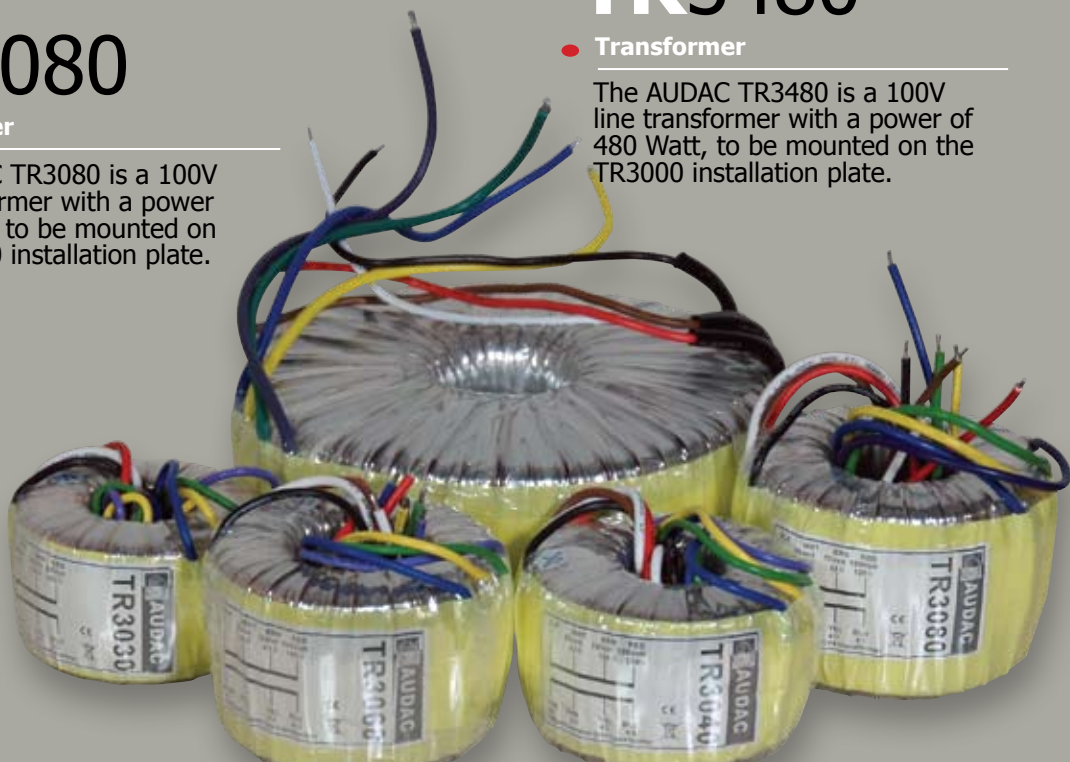
Transformer

The AUDAC TR3240 is a 100V line transformer with a power of 240 Watt, to be mounted on the TR3000 installation plate.

TR3480

Transformer

The AUDAC TR3480 is a 100V line transformer with a power of 480 Watt, to be mounted on the TR3000 installation plate.



Volume controls



VC2200

• Volume control

The VC2200 is Audac's sixfold volume control with a total power of 200 Watt for 100 Volt loudspeaker systems and to be used in 19" rack applications. It is supplied with a separate input for priority signal reception and each output is fitted with a relay. The volume controls are adjustable in 12 steps of 3 dB including zero position. (The black control knobs remains loose on the axle and must be locked before use.)



VC3036B

• Volume control

The VC3036 is Audac's volume control for use in combination with Audac/Niko installation materials and is available in black (VC3036B) and white (VC3036W). It has a power rating of 36 W and is adjustable in 10 steps of 3 dB. A built-in relay provides for the reception of priority signals.

VC3036W

• Volume control



VC4036B

• Volume control

The VC4036 is Audac's volume control for use in combination with bTicino installation materials and is available in black (VC4036B) and white (VC4036W). It has a power rating of 36 W and is adjustable in 10 steps of 3 dB. A built-in relay provides for the reception of priority signals.

VC4036W

• Volume control

Program selectors

The Audac PC3000 is a program selector for up to 5 programs. In the "zero" position, no program will come through unless the 24V priority relays of the volume control has been activated. The PC3000 is available in black (PC3000B) or white (PC3000W) and is suited for CP45 coverframes.



PC3000B

• Program selector



PC4000B

• Program selector

PC3000W

• Program selector

PC4000W

• Program selector

Connection plates

The CP45 and CP43 Series are AUDAC's answer for any installation and connection application. The CP45 Series comes in 2 colours, black or white, and in different configurations. It features connection possibilities for RCA, BNC, SVGA, SPE or XLR plugs.



CP45RCAB

• Connection plate

Black CP45 cover plate with red and white gold plated RCA female connectors.
CP45RCAW : white version



CP45BNCB

• Connection plate

Black CP45 cover plate with BNC female connector.
CP45BNCW : white version



CP45VGAB

• Connection plate

Black CP45 cover plate with sub-D15 SVGA connector.
CP45VGAW : white version



CP45XLMB*

• Connection plate

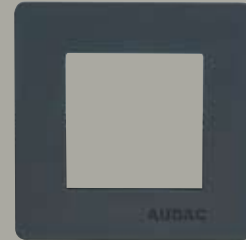
Black CP45 cover plate with D-size XLR male connector.
CP45XLRW : white version
* CP45XLF with D-size XLR female connector



CP45SPEB

• Connection plate

Black CP45 cover plate with D-size Speaker connector.
CP45SPEW : white version



CP45CF1

• Connection plate

1 unit black cover frame with metal subframe for mounting CP45 Series cover plates.



CP45CF2

• Connection plate

2 unit black cover frame with metal subframe for mounting CP45 Series cover plates.

CP43

• Connection plate

For bTicino coverplates
CP43BNC
CP43RCA
CP43VGA
CP43XLM
CP43XLF
CP43SPE

Measurement appliances



LCR610

• Measurement appliance

The AUDAC LCR610 is an essential digital measurement appliance for all sound engineers because of its many possibilities. Measurements for induction L, capacitance C, resistance R or even dissipation factor D can be carried out. Even SMD components can be measured; using the built-in component test sockets. All measurements can be carried out on 2 different frequencies, 120 Hz and 1 kHz. This allows very high accurate measurements.



CASE3

• Carrying case

Carrying case for LCR610, SLM330 and SLC336.



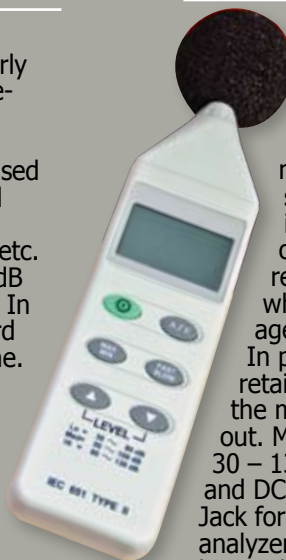
SLC336

• Measurement appliance

Every sound pressure meter needs to be calibrated regularly to ensure that every measurement remains reliable. This Sound - Level - Calibrator is easy to operate and can be used to calibrate all kinds of sound measurements, for example testing paging microphones, etc. Choice between 94 and 114 dB range, 94 dB SPL = 1 Pascal. In a handy storage box, standard opening for the 1" microphone. A 1/2" and a 1/4" adapter are also enclosed.

SLM330

• Measurement appliance



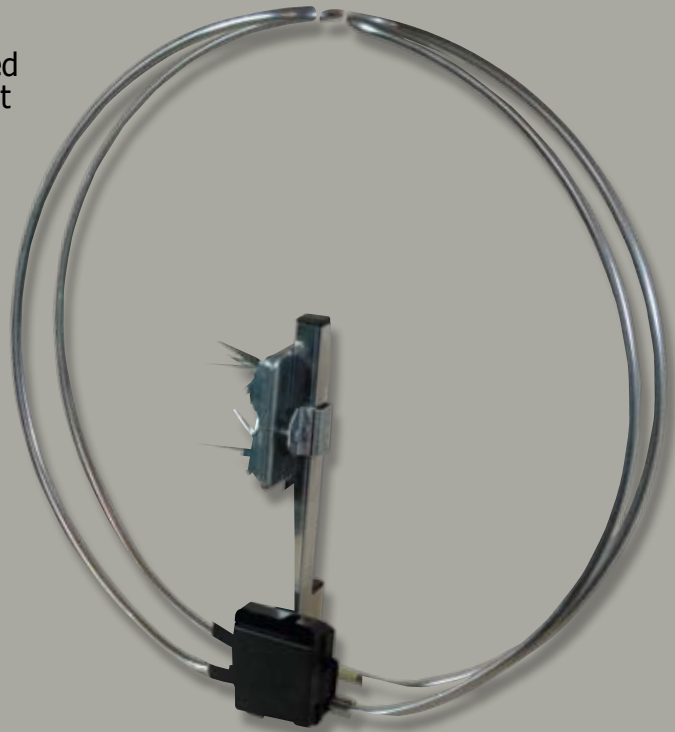
Digital sound level meter according to CE IEC 651 type 2 standard. This meter has been designed to carry out measurements of SPL (note) values for all sorts of audio applications. In the industry for measuring sound levels of all sorts of machines. Choice reach: A and C curve, fast and slow, which enables you to read the average value as well as the peak value. In position min/ max you can maintain/ retain the minimum/ maximum value of the measurement that has been carried out. Measurement reach in three steps of 30 - 130, 50 - 100 and 80 - 130 dB. AC and DC output via standard 3.5 mm mini Jack for frequency analysis, recording, FFT analyzer, etc. Stored in a black protective box with micro windshield, 3.5 mm Jack and zero adjust screwdriver.

Antenna

The AUDAC RGA10 is a omni directional outdoor FM antenne to be used in any installation to provide the best reception of FM-radio signals,where any kind of radio tuner is used.

RGA10

● **Outdoor antenna**



Power supply

The AUDAC PSD242 is a stabilised power supply adaptor 240 V AC to 24 V DC 1,50 A.
It can be used for all applications which need an external power of 24 V DC.



PSD242

● **Power supply**

Microphones

M67/M68/HM150/PDM100/CMX45/CMX55/MC720

	M67	M87	HM150	PDM100	CMX45	CMX55	MC720
Type	Dynamic				Electret		Condenser (Back electret)
Polar Pattern	Super Cardioid		Cardioid			Omni-directional	
Impedance	300 Ohm		600 Ohm		2,2 kOhm		2 kOhm
Frequency Response	50 Hz - 18 kHz		100 Hz - 10 kHz	80 Hz - 12 kHz	150 Hz - 20 kHz		20 Hz - 20 kHz
Sensitivity	-75 dB ± 3dB	-75 dB ± 3dB	-78 dB ± 3dB	-70 dB ± 3dB	-44 dB ± 3dB	-44 dB ± 3dB	-45 dB ± 3dB
Signal to noise ratio	n/a	n/a	n/a	n/a	58 dB	58 dB	n/a
Maximum Input SPL	n/a	n/a	n/a	n/a	120 dB	120 dB	135 dB
Phantom Power Operating Voltage	n/a	n/a	n/a	n/a	12 V - 52 V DC		1,5 V - 12 V
Current consupcion	n/a	n/a	n/a	n/a	500 µA	500 µA	0,6 mA
Voice coil	Copper	Aluminum	Copper	Copper	n/a	n/a	n/a
Construction	On/Off switch		ABS	Die cast zinc, with 3 position switch	Gooseneck 45 cm	Gooseneck 55 cm	Steel wire
Connector	XLR			XLR 3p	XLR		Jack 3.5 mm male stereo
Length Connection Cable	5 m		1 m	2 m	n/a	n/a	1,2 m
Dimensions (WxHxD)	49 x 182 x 49 mm	51 x 178 x 51 mm	60 x 100 x 50 mm	110 x 365 x 160	19 x 453 x 19 mm	19 x 553 x 19 mm	n/a
Weight	0,300 Kg	0,350 Kg	0,200 Kg	0,850 Kg	0,155 Kg	0,180 Kg	16 g
Colour	Grey		Black				Flesh colour
Accessories	Microphone clamp		Mounting bracket	n/a	Windscreen		
	Microphone cable						
Option	MC50 Windscreen		n/a	n/a	n/a	n/a	n/a

APM/MP100/APT20

	APM	MP100	APT20
Operating Voltage	24V DC	n/a	24 V DC
Phantom Power	n/a	n/a	18 V DC
Current consumption	n/a	n/a	14 mA
Construction	Steel	Metal	Aluminum
Connector	2 x Xlr	XLR - mini XLR	XLR
Dimensions (WxHxD)	120 x 192 x 50 mm	19 x 86 x 19 mm	44 x 110 x 160 mm
Weight	0,500 Kg	70 g	1,000 Kg
Colour	Grey RAL7016	Black	

Accessories

Transfo's

	TR1006	TR1010	ATU44
Maximum Power	6 W	10 W	n/a
Line transfo power taps	1600 Ohm / 6 W	1000 Ohm / 10 W	n/a
	3300 Ohm / 3 W	1333 Ohm / 7,5 W	n/a
	6600 Ohm / 1,5 W	2000 Ohm / 5 W	n/a
		3333 Ohm / 2,5 W	n/a
Connectors	Cable		XLR
Construction	Metal		
Dimensions (WxHxD)	34 x 35 x 43 mm	52 x 60 x 56 mm	35 x 105 x 110 mm
Weight	0,185 Kg	0,620 Kg	0,240 Kg
Colour	n/a	n/a	Black
Accessories	n/a		

Transfo's

	TR3000	TR3030	TR3040	TR3060	TR3080	TR3120	TR3240	TR3480
Maximum Power	n/a	30 W	40 W	60 W	80 W	120 W	240 W	480 W
Connectors	n/a	Cable (0,2 m)						
Construction	Steel	Copper						
Dimensions (WxHxD)	483 x 90 x 310 mm	n/a	n/a	n/a	n/a	n/a	n/a	n/a
Dimensions (DxH)	n/a	80 x 50 mm	85 x 50 mm	85 x 60 mm	90 x 65 mm	105 x 65 mm	130 x 65 mm	170 x 65 mm
Weight	3,400 Kg	0,950 Kg	1,230 Kg	1,270 Kg	1,600 Kg	2,420 Kg	4,500 Kg	7,020 Kg
Colour	Black	Blank						
Accessories	n/a	Mounting bolt, nut and washer						

Volume Controls

	VC3036	VC4036	PC3000	PC4000	VC2200
Maximum power load	36 W		n/a	n/a	200 W
Maximum operation voltage	100 V		n/a	n/a	100 V
Attenuation	9 x 3 dB		n/a	n/a	11 x 3 dB
Programs	n/a	n/a	5 + priority		n/a
Relay	24 V - 25 mA		24 V - 25 mA	24 V - 25 mA	24 V - 25 mA
Dimensions (WxHxD)	45 x 45 x 60 mm		45 x 45 x 60 mm	45 x 45 x 60 mm	482 x 90 x 210 mm
Built in depth	45 mm				n/a
Mounting	AUDAC / NIKO	bTicino	AUDAC / NIKO	bTicino	19"
Weight	0,125 Kg		100 gr		3,06 Kg
Colours	Black - VC3036B	Black - VC4036B	Black - PC3000B	Black - PC4000B	
	White - VC3036W	White - VC4036W	White - PC3000W	White - PC4000W	

Accessories

Connection plates 45 mm

	CP45RCA	CP45BNC	CP45VGA	CP45XLF	CP45XLM	CP45SPE	CP45CF1	CP45CF2
Suited for	2 x RCA/Cinch	1 x BNC	1 x Sub D 15	1 x D-size XLR Female	1 x D-size XLR Male	12 x D-size speaker	1 x CP45	2 x CP45
Dimensions (WxHxD)	45 x 45 x 25 mm						80 x 80 x 12 mm	148 x 80 x 12 mm
Built in depth	45 mm							
Mounting	AUDAC / NIKO							
Weight	15 g						80 g	100 g
Colours	Black - CP45RCA/B	Black - CP45BNC/B	Black - CP45VGA/B	Black - CP45XLF/B	Black - CP45XLM/B	Black - CP45SPE/B	Black - CP45CF1/B	Black - CP45CF2/B
	White - CP45RCA/W	White - CP45BNC/W	White - CP45VGA/W	White - CP45XLF/W	White - CP45XLM/W	White - CP45SPE/W	White - CP45CF1/W	White - CP45CF2/W

Connection plates 43 mm

	CP43RCA	CP43BNC	CP43VGA	CP43XLF	CP43XLM	CP43SPE
Suited for	2 x RCA/Cinch	1 x BNC	1 x Sub D 15	1 x D-size XLR Female	1 x D-size XLR Male	12 x D-size speaker
Dimensions (WxHxD)	43 x 43 x 20 mm					
Built in depth	45 mm					
Mounting	bTicino					
Weight	15 g					
Colours	Black - CP43RCA/B	Black - CP43BNC/B	Black - CP43VGA/B	Black - CP43XLF/B	Black - CP43XLM/B	Black - CP43SPE/B
	White - CP43RCA/W	White - CP43BNC/W	White - CP43VGA/W	White - CP43XLF/W	White - CP43XLM/W	White - CP43SPE/W

RGA10/PSD242

	RGA10	PSD242
Power Supply	n/a	100 - 240 V AC
DC Output	n/a	24 V DC
Mounting	30 - 50 mm pole	n/a
Construction	Aluminum	ABS
Dimensions (WxHxD)	510 x 90 x 510 mm	60 x 38 x 120 mm
Weight	0,780 Kg	320 g
Colour	Metal	Black
Option	Mounting pole	n/a

Accessories

LCR610/SLM330/SLC336/Case3

	LCR610	SLM330	SLC336	Case3
Measurment Parameters	L-C-R + D factor	n/a	n/a	n/a
Test Frequency	120 Hz + 1 kHz	31,5 Hz - 8 kHz	1 kHz	n/a
Range control	Manual	Manual	Manual	n/a
Measruring speed	1 / sec	Slow:1sec ; Fast:125msec	n/a	n/a
Reaction time	1 sec	n/a	n/a	n/a
Display	LCD 3,5 digits	LCD 4 digits	n/a	n/a
Resolution	n/a	0,1 dB	n/a	n/a
Display Update	n/a	0,5 sec	n/a	n/a
Scale	n/a	A/C curve ; 30 - 80 dB ; 50 - 100 dB ; 80 - 130 dB	n/a	n/a
Alarm Function	n/a	OVER above 130 dB ; UNDER under 30 dB	n/a	n/a
Connector	n/a	n/a	n/a	n/a
Power Supply	9 V Battery			n/a
Max Power Consumption	155 mW	n/a	n/a	n/a
Adapter	n/a	9 V DC	n/a	n/a
Battery life	50 Hours	50 Hours	100 Hours	n/a
AC Output	n/a	1V rms / 600 Ohm	n/a	n/a
DC Output	n/a	10 mV / dB / 100 Ohm	n/a	n/a
Standard Conformity	n/a	IEC 651 type2 ; ANSI S1.4 type2	IEC 942 type2	n/a
Construction	ABS			
Dimensions (WxHxD)	87 x 175 x 40 mm	64 x 275 x 30 mm	65 x 102 x 55 mm	390 x 320 x 110 mm
Weight	0,380 Kg	0,240 Kg	0,160 Kg	1,110 Kg
Colour	Black	White	White	Black
Accessories	Test leads	Windscreen	1/2" and 1/4" mic adapter	Foam inlay for
	Manual	Manual	Manual	LCR610
	9V Battery	9V Battery	9V Battery	SLM330
		Screwdriver	Carrying case	SLC336
		3,5 mm jack mono plug		
		Carrying case		
Option	CASE3 carrying case			

